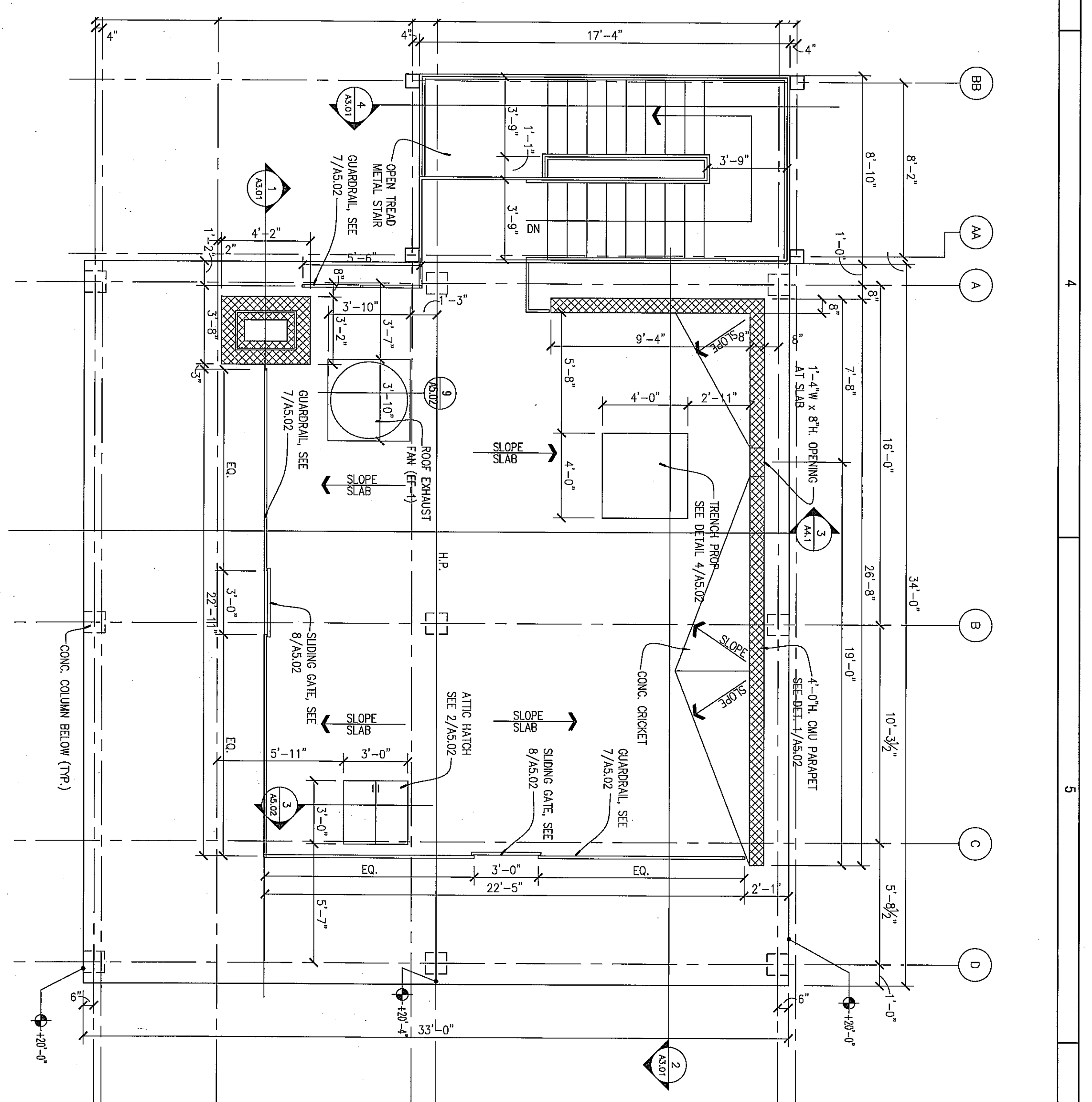


**FIRST FLOOR PLAN**  
 1/4" = 1'-0"

- KEYNOTES:**
- 1 1/2" OPEN JOINT SEE DET. 9/A&01
  - 2 1/2" OPEN JOINT SEE DET. 4/A&01
  - 3 1/2" OPEN JOINT SEE DET. 5/A&01



**ROOF PLAN**  
 1/4" = 1'-0"

**ROOM FINISH SCHEDULE**

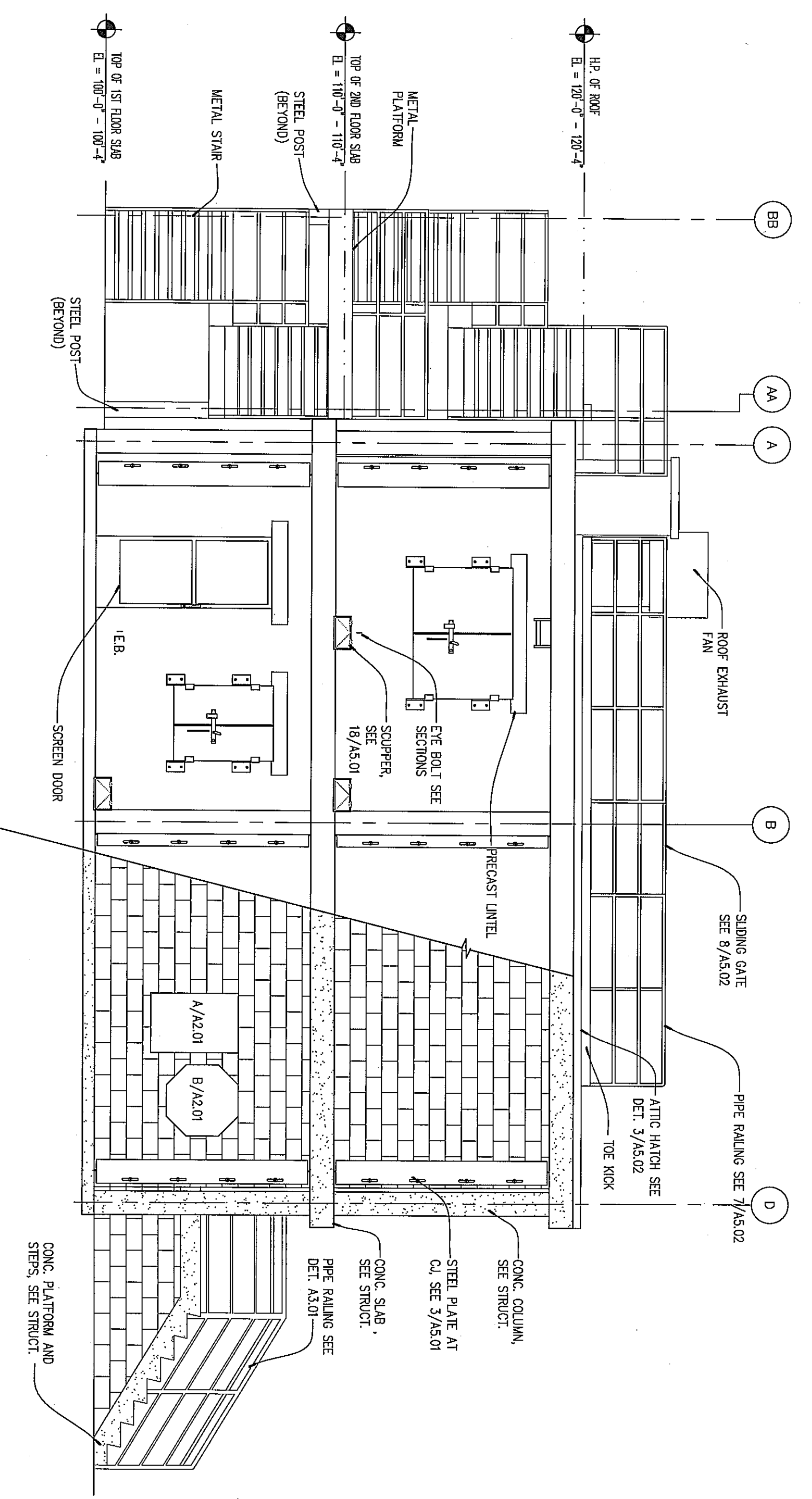
ROOM NO.	ROOM NAME	FLOOR	BASE	WALLS	CEILING	REMARKS
100	CLASS ROOM	CONCRETE	CONCRETE BLOCK	CONCRETE BLOCK	CONCRETE BLOCK	
101	CLASS ROOM	CONCRETE	CONCRETE BLOCK	CONCRETE BLOCK	CONCRETE BLOCK	
102	CLASS ROOM	CONCRETE	CONCRETE BLOCK	CONCRETE BLOCK	CONCRETE BLOCK	
103	CLASS ROOM	CONCRETE	CONCRETE BLOCK	CONCRETE BLOCK	CONCRETE BLOCK	
200	CLASS ROOM	CONCRETE	CONCRETE BLOCK	CONCRETE BLOCK	CONCRETE BLOCK	
201	CLASS ROOM	CONCRETE	CONCRETE BLOCK	CONCRETE BLOCK	CONCRETE BLOCK	
202	CLASS ROOM	CONCRETE	CONCRETE BLOCK	CONCRETE BLOCK	CONCRETE BLOCK	
203	CLASS ROOM	CONCRETE	CONCRETE BLOCK	CONCRETE BLOCK	CONCRETE BLOCK	

**DOOR AND FRAME SCHEDULE**

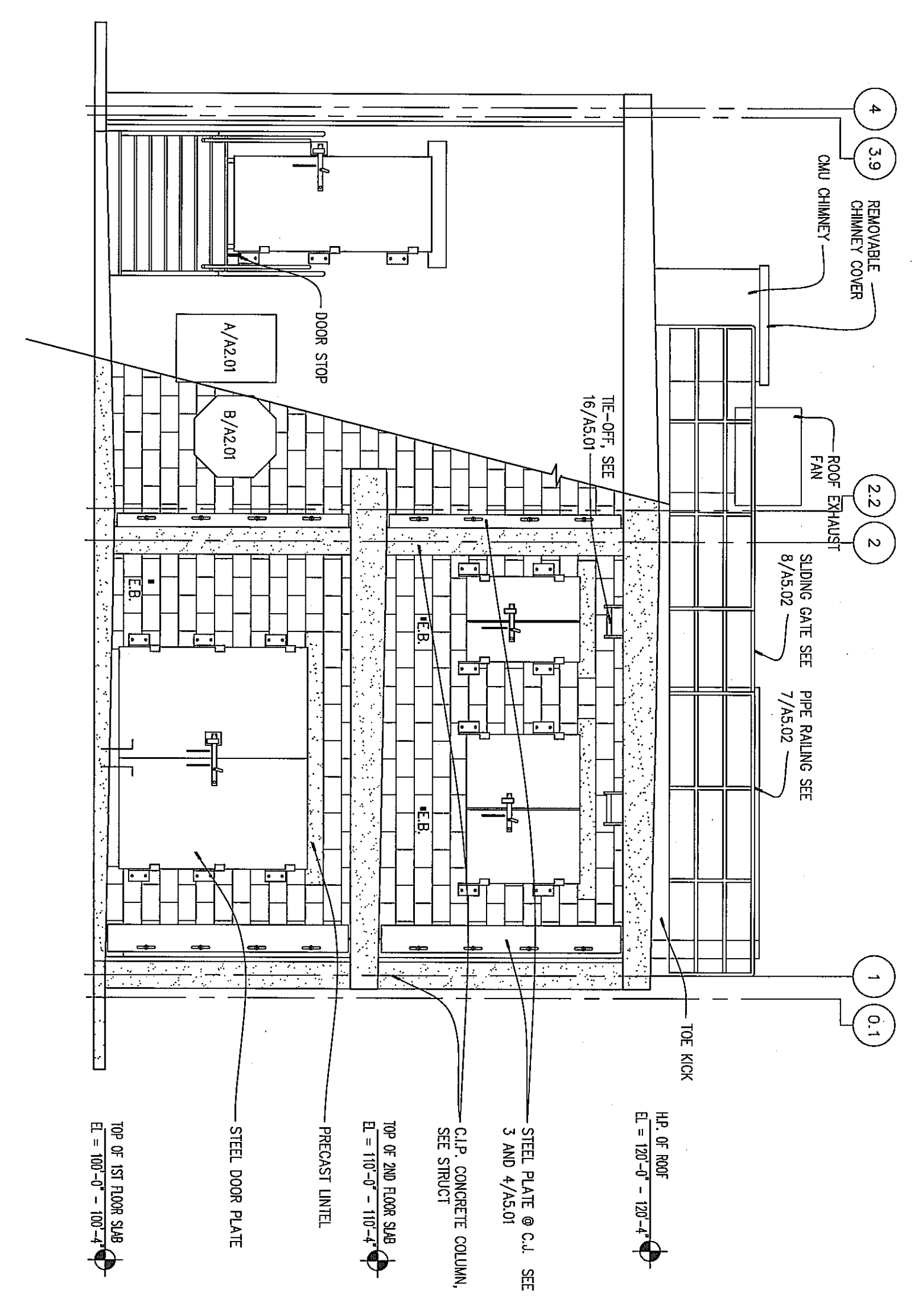
NO.	TYPE	WD	HT	THK	MATERIAL	GLAZING	TYPE	MANT	FRAME			FIRE RATING LABEL	HDMR SET	REMARKS
									HEAD	JAMB	SILL			
100/A	A	3'-0"	7'-0"	1 1/2"	---	---	---	---	3/4" x 6.0"	1 1/2" x 6.0"	2 x 4.2"	---	---	FRAMING LATER SUBJECT TO 5/A&22
101/A	A	3'-0"	7'-0"	1 1/2"	---	---	---	---	3/4" x 6.0"	1 1/2" x 6.0"	1 1/2" x 6.0"	---	---	FRAMING LATER SUBJECT TO 5/A&22
102/A	A	3'-0"	7'-0"	1 1/2"	---	---	---	---	3/4" x 6.0"	1 1/2" x 6.0"	1 1/2" x 6.0"	---	---	FRAMING LATER SUBJECT TO 5/A&22
103/A	A	3'-0"	7'-0"	1 1/2"	---	---	---	---	3/4" x 6.0"	1 1/2" x 6.0"	1 1/2" x 6.0"	---	---	FRAMING LATER SUBJECT TO 5/A&22
200/A	A	3'-0"	7'-0"	1 1/2"	---	---	---	---	3/4" x 6.0"	1 1/2" x 6.0"	1 1/2" x 6.0"	---	---	FRAMING LATER SUBJECT TO 5/A&22
201/A	A	3'-0"	7'-0"	1 1/2"	---	---	---	---	3/4" x 6.0"	1 1/2" x 6.0"	1 1/2" x 6.0"	---	---	FRAMING LATER SUBJECT TO 5/A&22
202/A	A	3'-0"	7'-0"	1 1/2"	---	---	---	---	3/4" x 6.0"	1 1/2" x 6.0"	1 1/2" x 6.0"	---	---	FRAMING LATER SUBJECT TO 5/A&22
203/A	A	3'-0"	7'-0"	1 1/2"	---	---	---	---	3/4" x 6.0"	1 1/2" x 6.0"	1 1/2" x 6.0"	---	---	FRAMING LATER SUBJECT TO 5/A&22

GENERAL NOTES:  
 1. SEE SHEET A&01 FOR DOOR TYPES AND DETAILS.

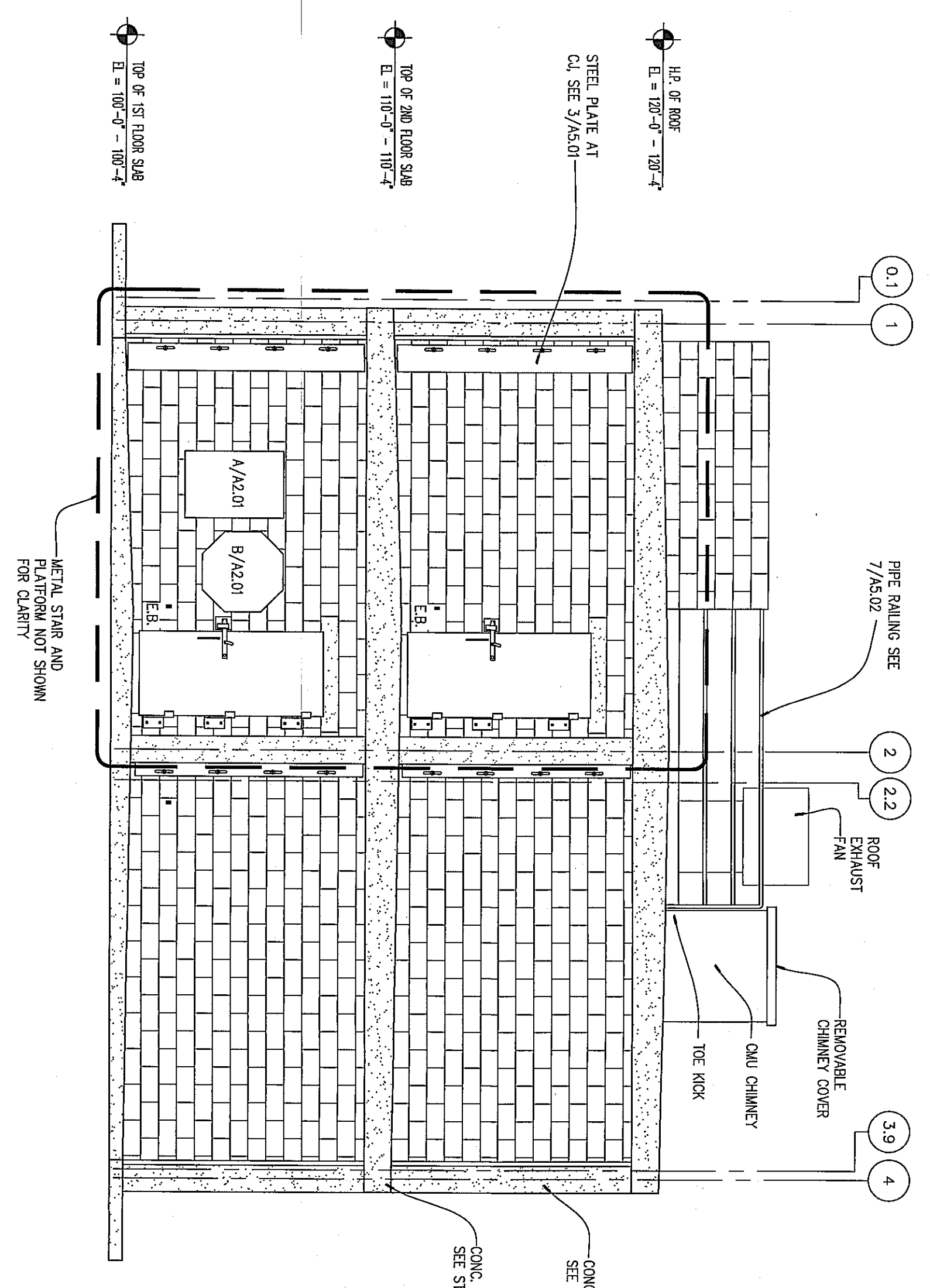
<p><b>CONSULTANTS</b></p> <p><b>L. Robert Kimball &amp; Associates</b>          Architects and Engineers, Inc.</p> <p>615 West Highland Ave.          Ebensburg, PA 15931</p> <p>phone (814) 472-7700          fax (814) 472-7712          email <a href="mailto:rdk@lrbkimball.com">rdk@lrbkimball.com</a>          web site <a href="http://www.lrbkimball.com">www.lrbkimball.com</a></p>	<p><b>PROJECT NAME:</b></p> <p>WESTMORELAND COUNTY COMMUNITY COLLEGE CLASS A BURN BUILDING</p> <p><b>OWNER:</b></p> <p>WESTMORELAND COUNTY COMMUNITY COLLEGE</p> <p>YOUNGWOOD, PA 15887</p>	<p><b>PROFESSIONAL</b></p> <p><b>MARK</b> DATE DESCRIPTION</p> <p>05 / 02 / 07 ISSUE</p> <p>07-2290-0175 PROJECT NO.</p> <p>07-2290-0175 CAD DWG FILE: XXXXXXXX.dwg</p> <p>AKLE DRAWN BY:</p> <p>AKLE CHECKED BY:</p> <p>AKLE</p> <p>© L. Robert Kimball &amp; Associates          Architects and Engineers, Inc.</p> <p>SHEET TITLE</p> <p>FIRST FLOOR PLAN,          SECOND FLOOR PLAN,          ROOF PLAN          AND          SCHEDULES</p> <p style="font-size: 2em; font-weight: bold;">A1.01</p>
--	---	--



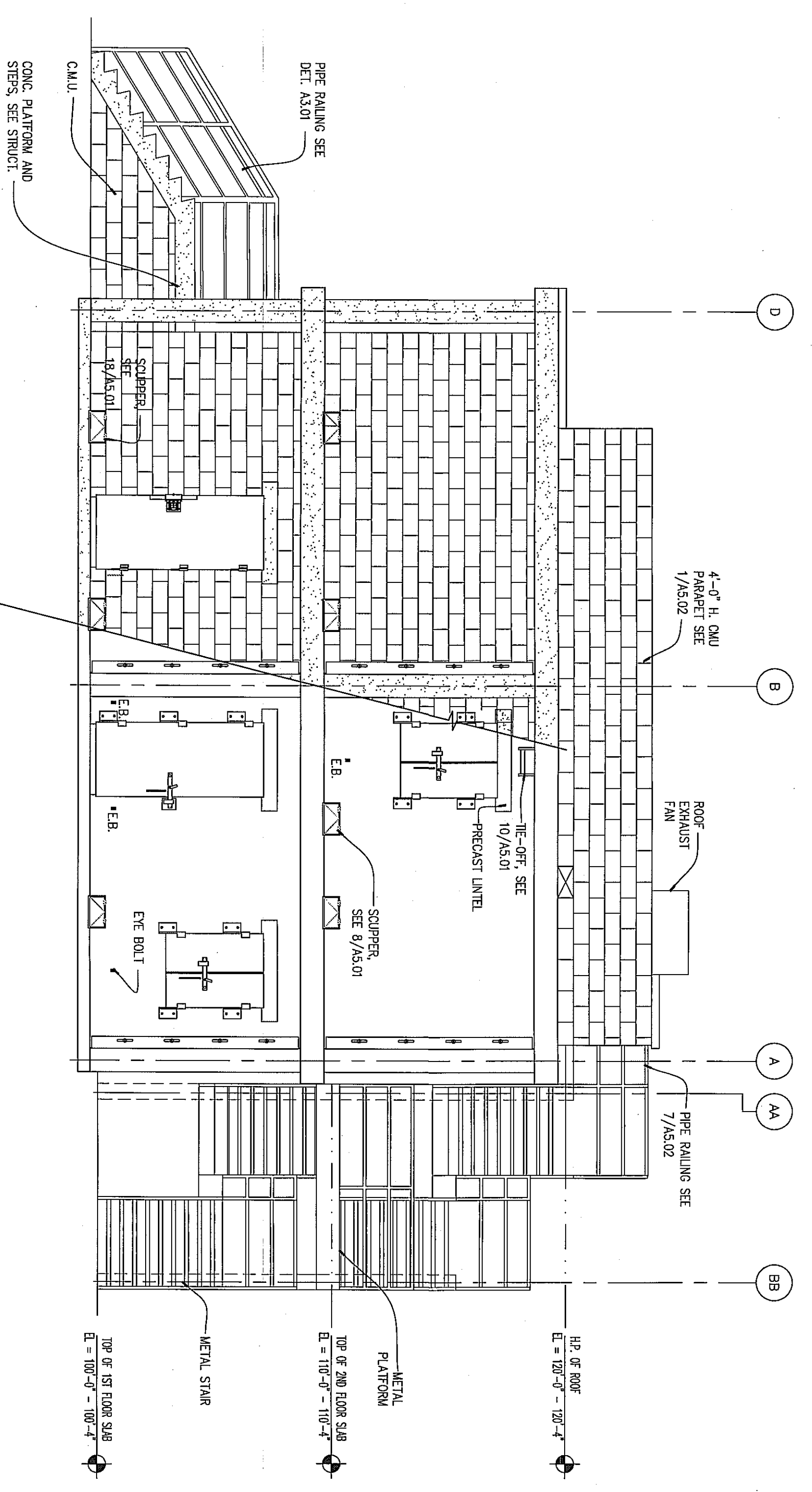
1 SOUTH ELEVATION  
 1/4" = 1'-0"



3 EAST ELEVATION  
 1/4" = 1'-0"



2 WEST ELEVATION  
 1/4" = 1'-0"

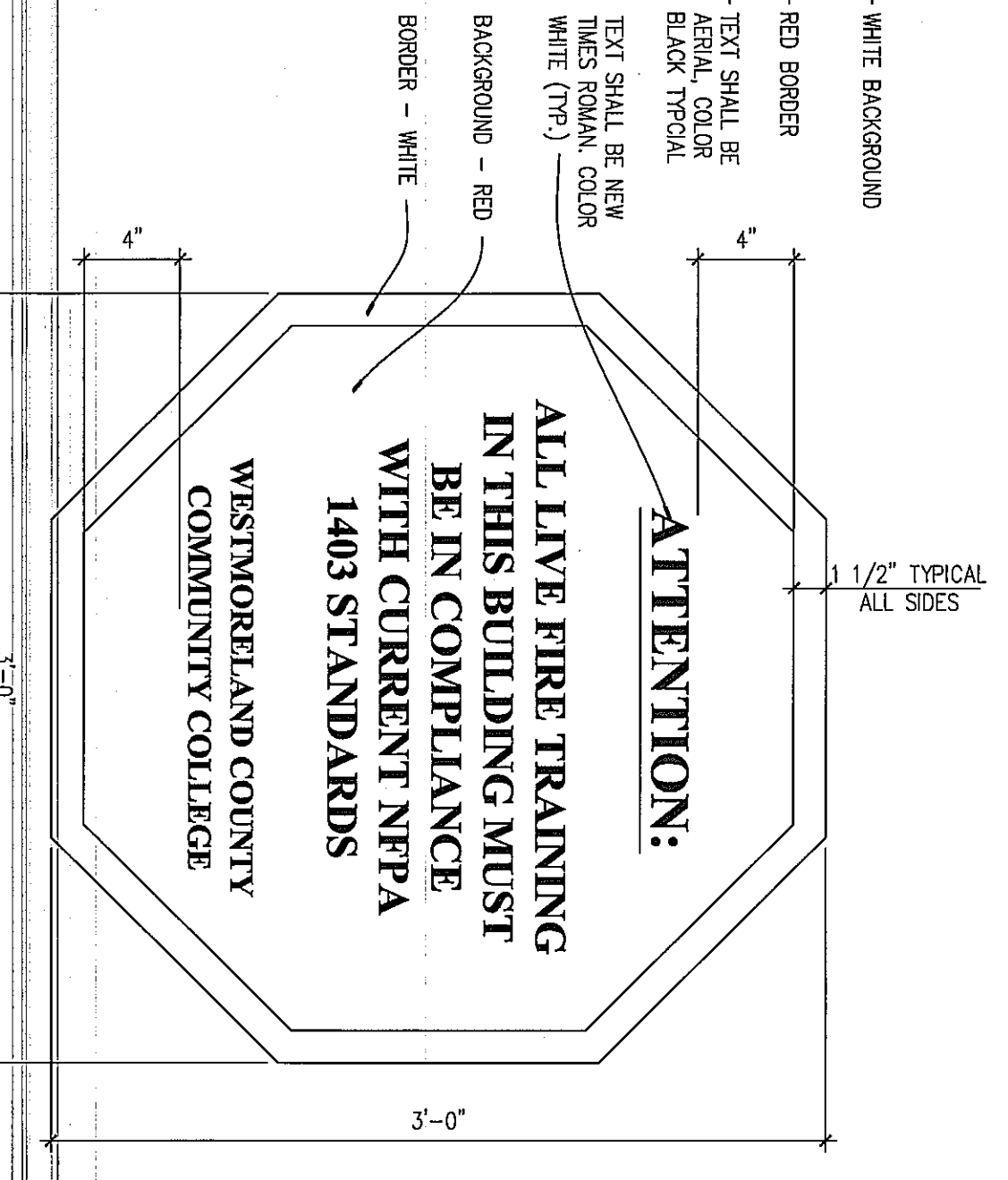


4 NORTH ELEVATION  
 1/4" = 1'-0"

**LIVE FIRE TRAINING DESIGN CRITERIA**

THE BUILDING HAS BEEN DESIGNED FOR THE FOLLOWING CRITERIA

1. MAXIMUM NUMBER OF LIVE FIRE TRAINING DAYS PER YEAR = 30
2. MAXIMUM NUMBER OF STUDENTS PER TRAINING SESSION = 100
3. MAXIMUM NUMBER OF STUDENTS PER TRAINING SESSION = 100
4. MAXIMUM NUMBER OF STUDENTS PER TRAINING SESSION = 100
5. MAXIMUM NUMBER OF STUDENTS PER TRAINING SESSION = 100
6. MAXIMUM NUMBER OF STUDENTS PER TRAINING SESSION = 100
7. MAXIMUM NUMBER OF STUDENTS PER TRAINING SESSION = 100
8. MAXIMUM NUMBER OF STUDENTS PER TRAINING SESSION = 100
9. MAXIMUM NUMBER OF STUDENTS PER TRAINING SESSION = 100
10. MAXIMUM NUMBER OF STUDENTS PER TRAINING SESSION = 100



A USE CRITERIA ALUMINUM SIGNAGE  
 1/2" = 1'-0"

B NFPA 1403 ALUMINUM SIGNAGE  
 1/2" = 1'-0"

**Kimball**  
 L. Robert Kimball & Associates  
 Architects and Engineers, Inc.  
 615 West Highland Ave.  
 Ebensburg, PA 15931  
 phone (814) 472-7700  
 fax (814) 472-7712  
 email oed@kimball.com  
 web site www.kimball.com

PROJECT NAME  
 WESTMORELAND COUNTY COMMUNITY COLLEGE CLASS A BURN BUILDING  
 OWNER  
 WESTMORELAND COUNTY COMMUNITY COLLEGE  
 YOUNGWOOD, PA 15897

REVISIONS

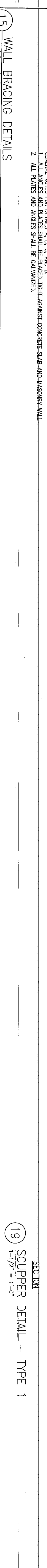
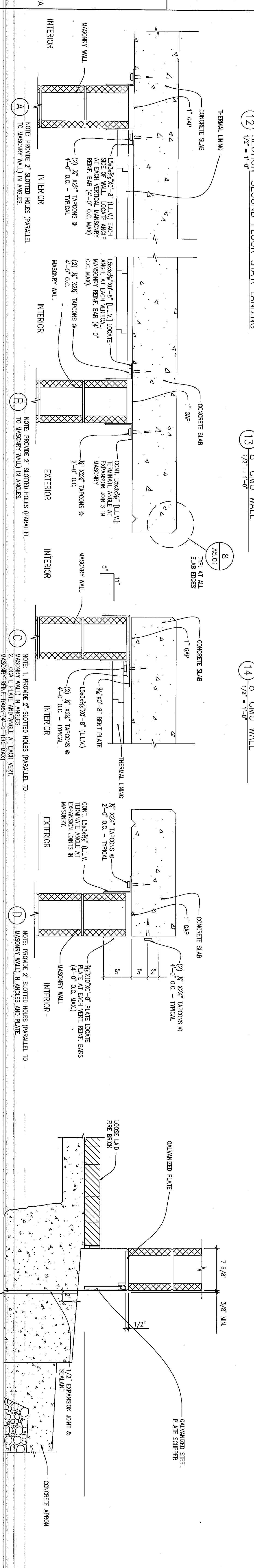
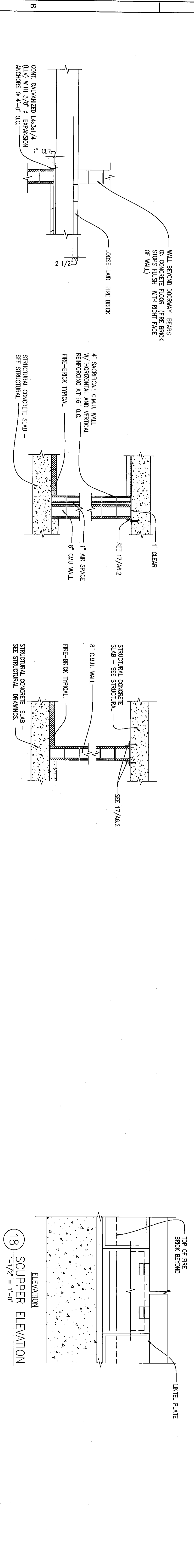
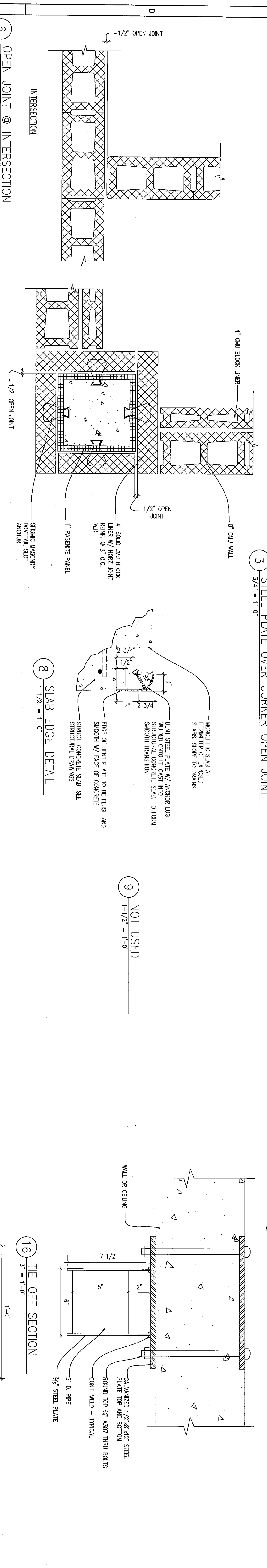
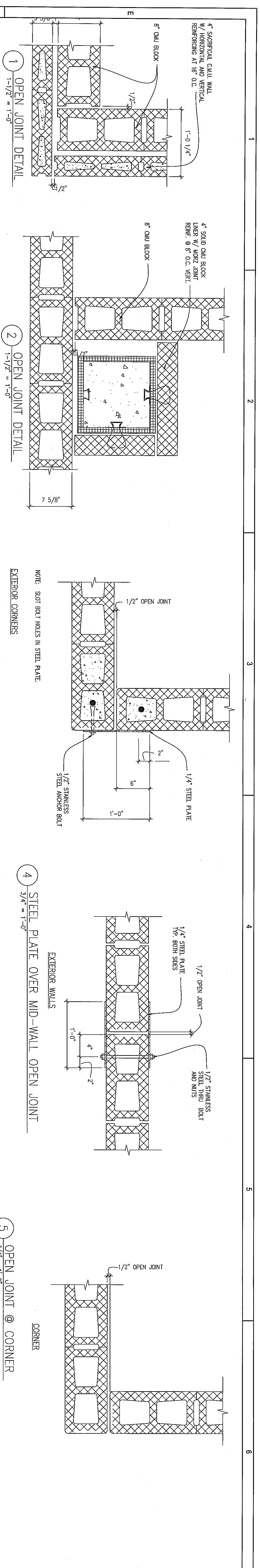
MARK	DATE	DESCRIPTION
ISSUE	05 / 02 / 07	
PROJECT NO.	07-2200 - 0175	
CAD DWG FILE	XXXXXXXX.dwg	
DRAWN BY	AKILE	
CHECKED BY	DG	

© L. Robert Kimball & Associates  
 Architects and Engineers, Inc.









**Kimball**  
 L. Robert Kimball & Associates  
 Architects and Engineers, Inc.  
 615 West Highland Ave.  
 Ebensburg PA 15931  
 phone (814) 472-2700  
 fax (814) 472-7712  
 email oakledge@kimball.com  
 web site www.kimball.com

CONSULTANTS

PROFESSIONAL

PROJECT NAME:  
 WESTMORELAND COUNTY COMMUNITY COLLEGE CLASS A BURN BUILDING  
 OWNER:  
 WESTMORELAND COUNTY COMMUNITY COLLEGE  
 YOUNGWOOD, PA 15897

MARK DATE DESCRIPTION

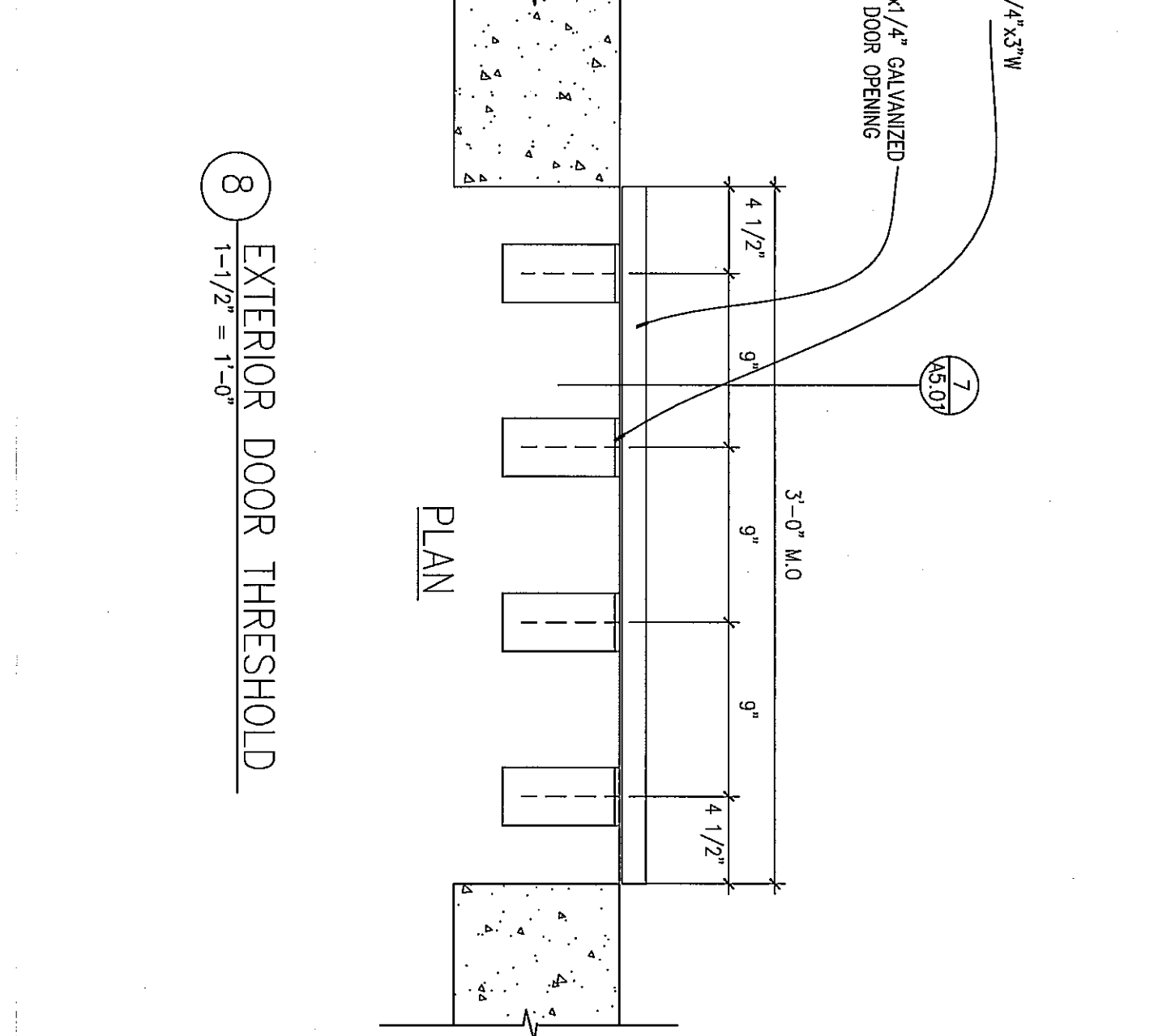
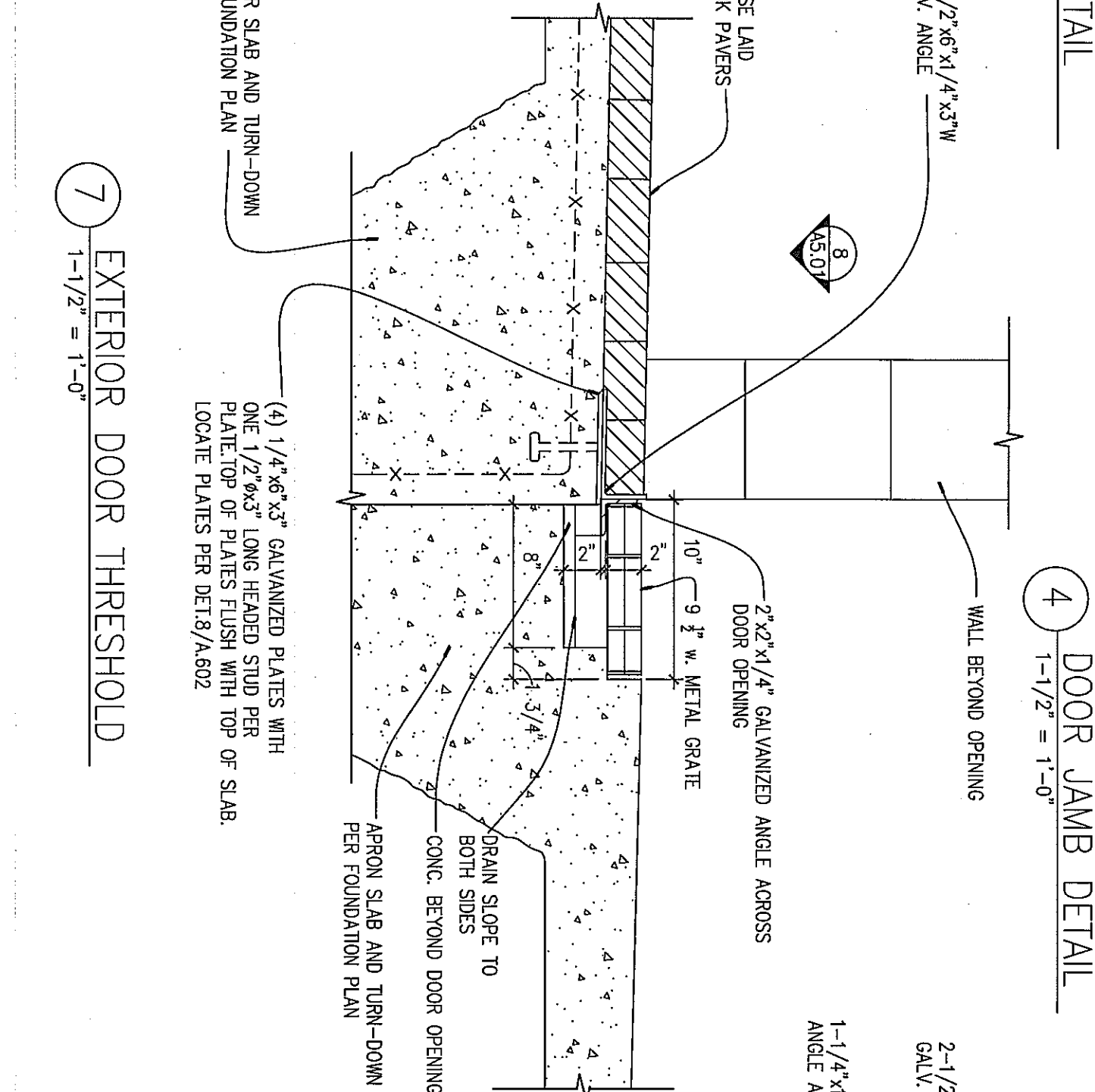
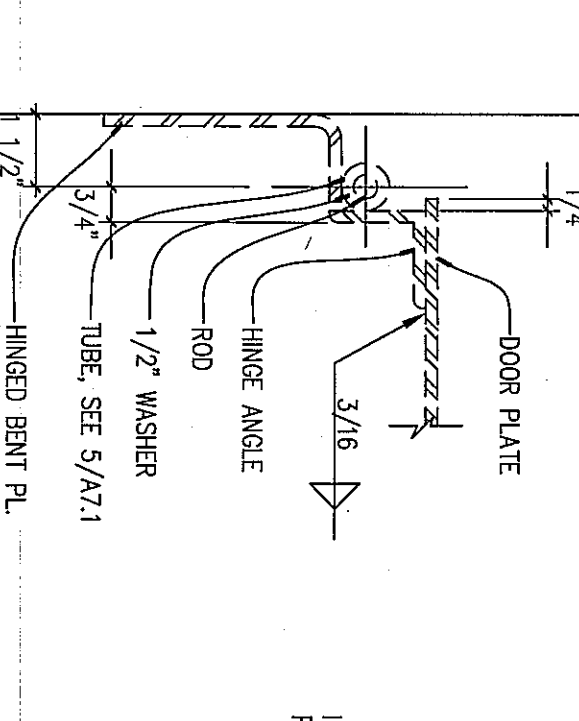
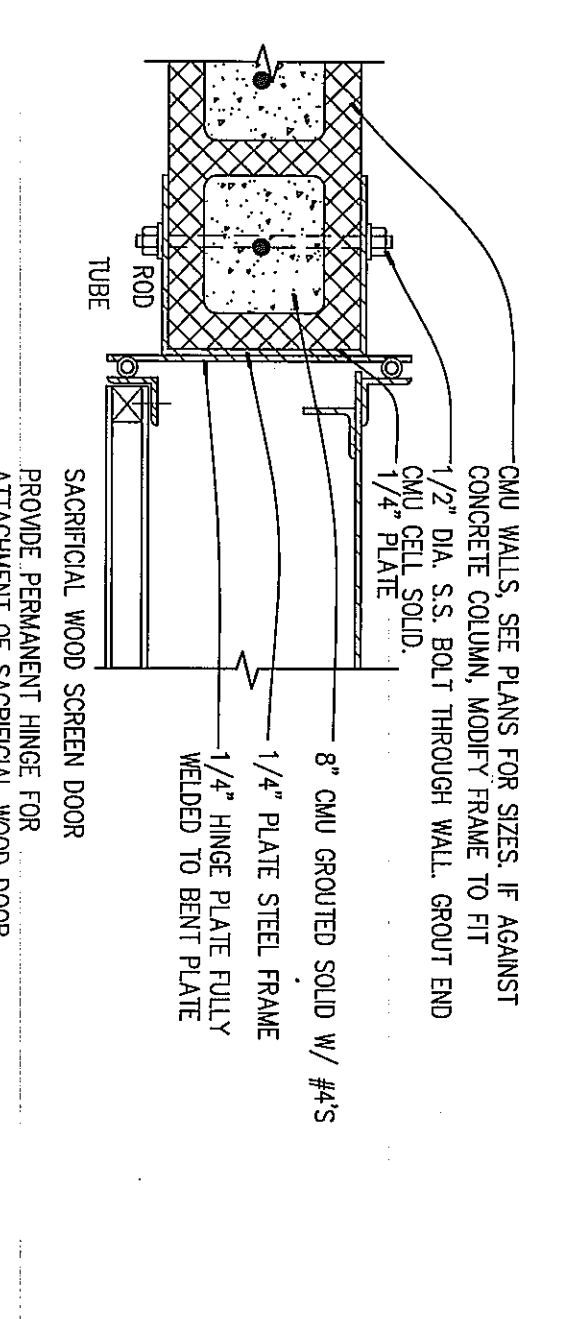
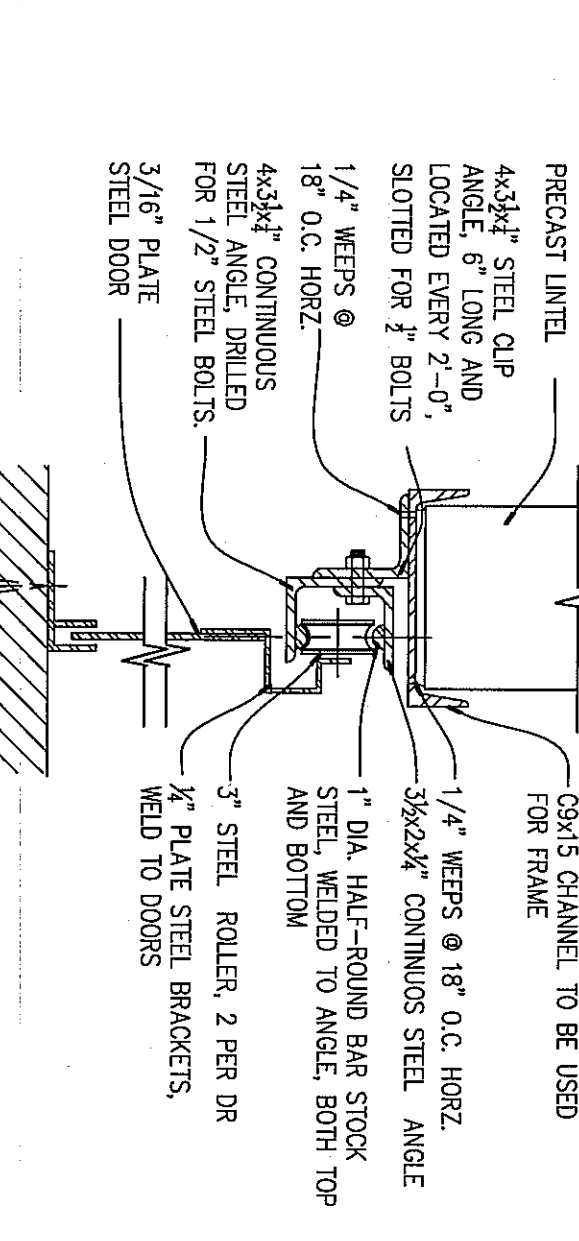
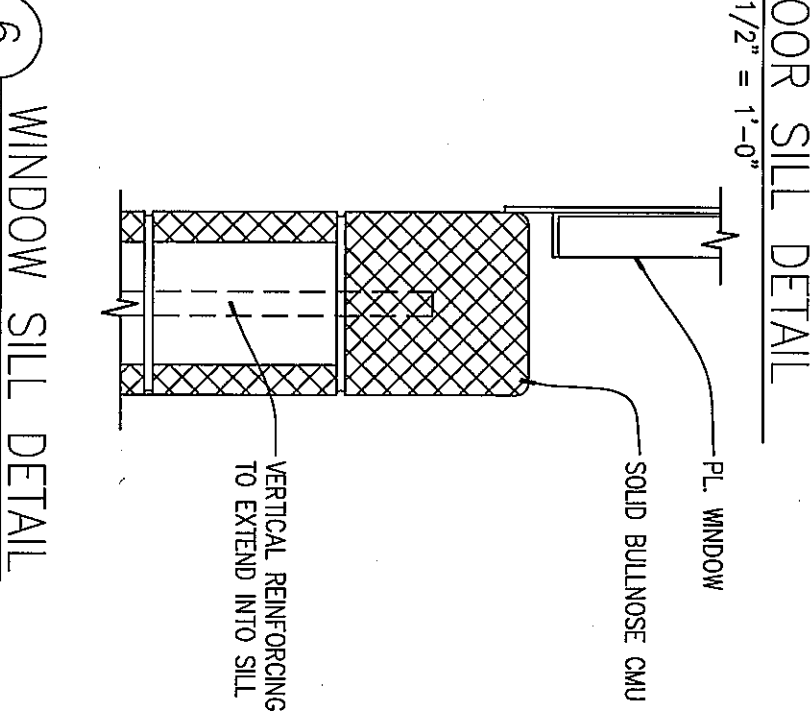
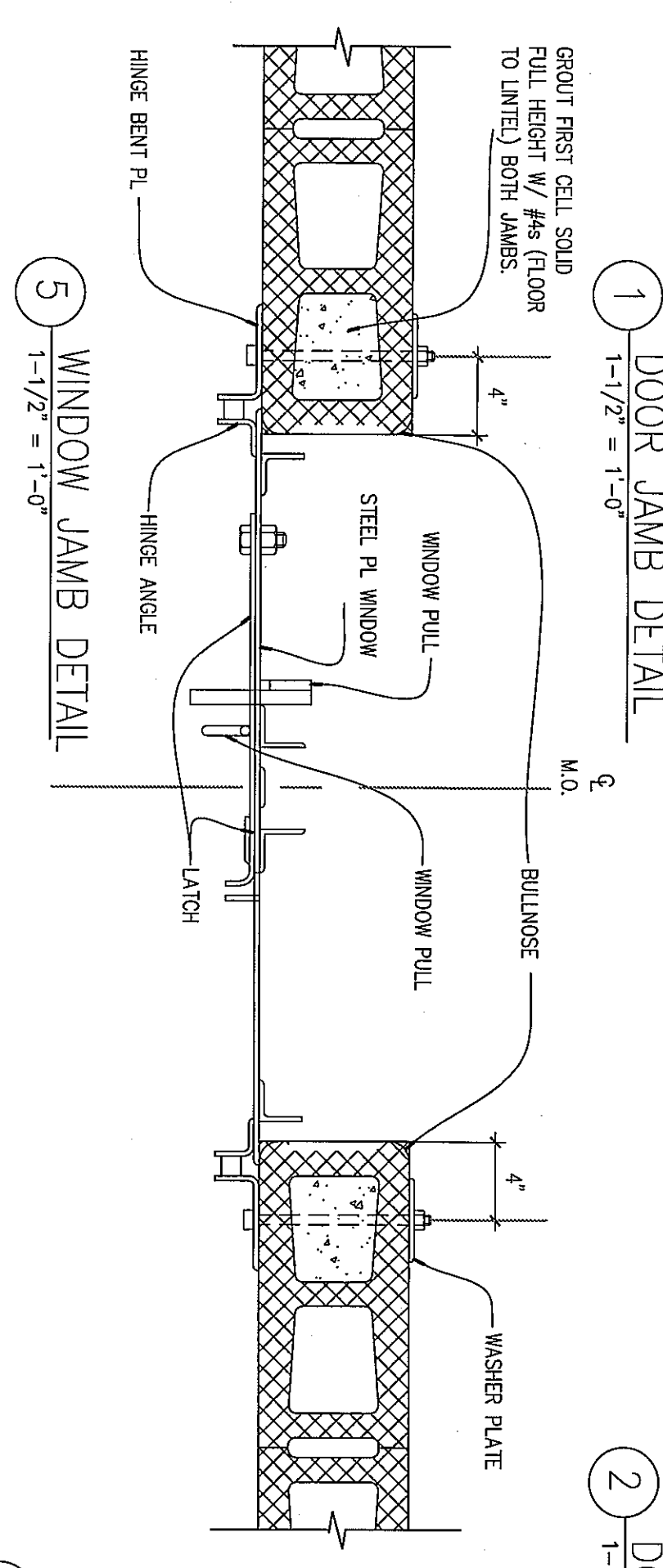
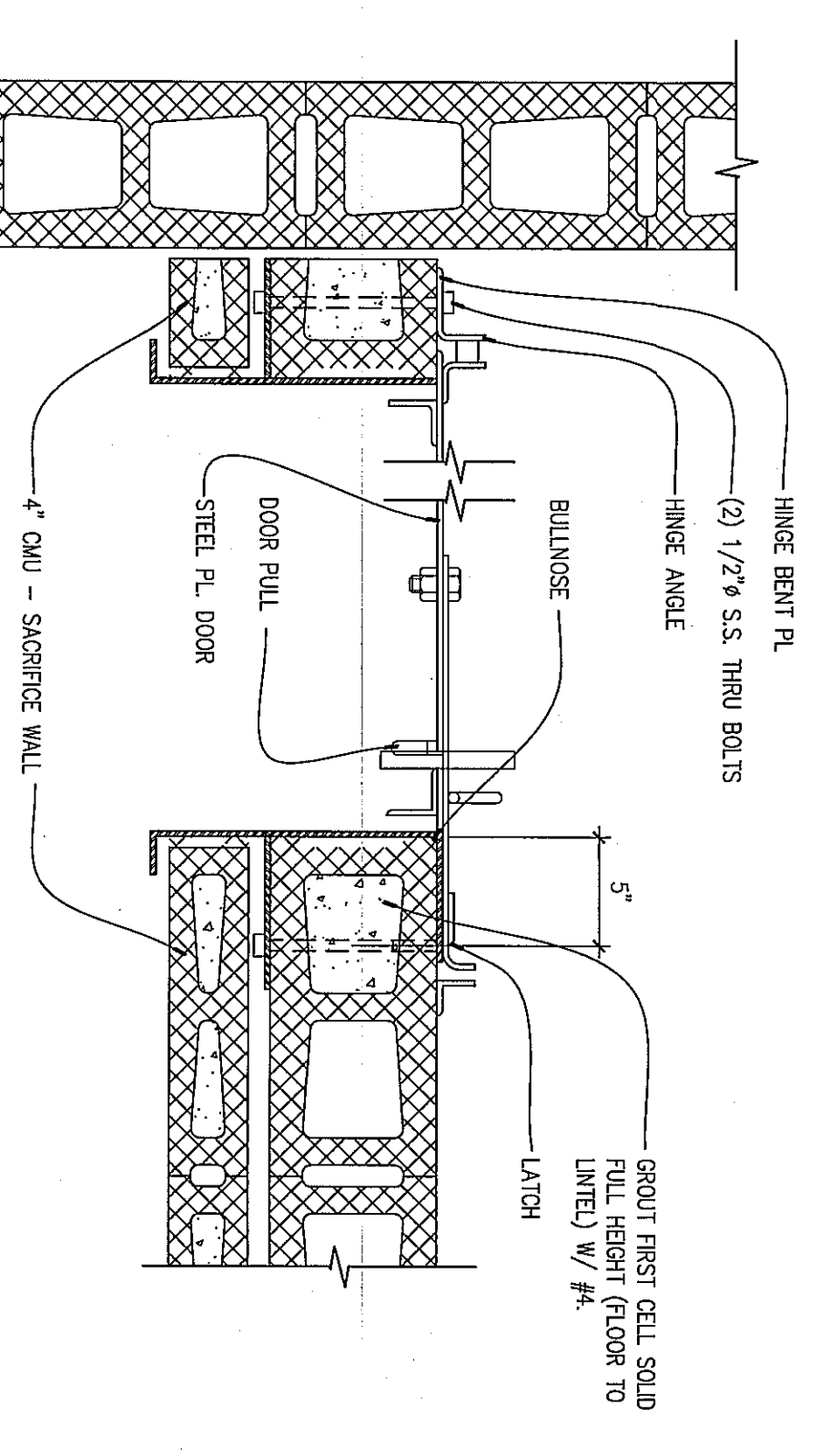
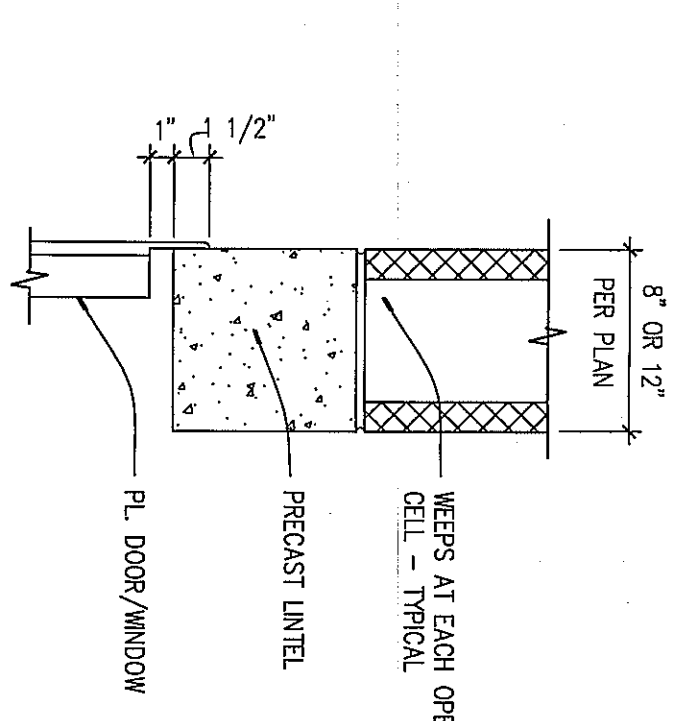
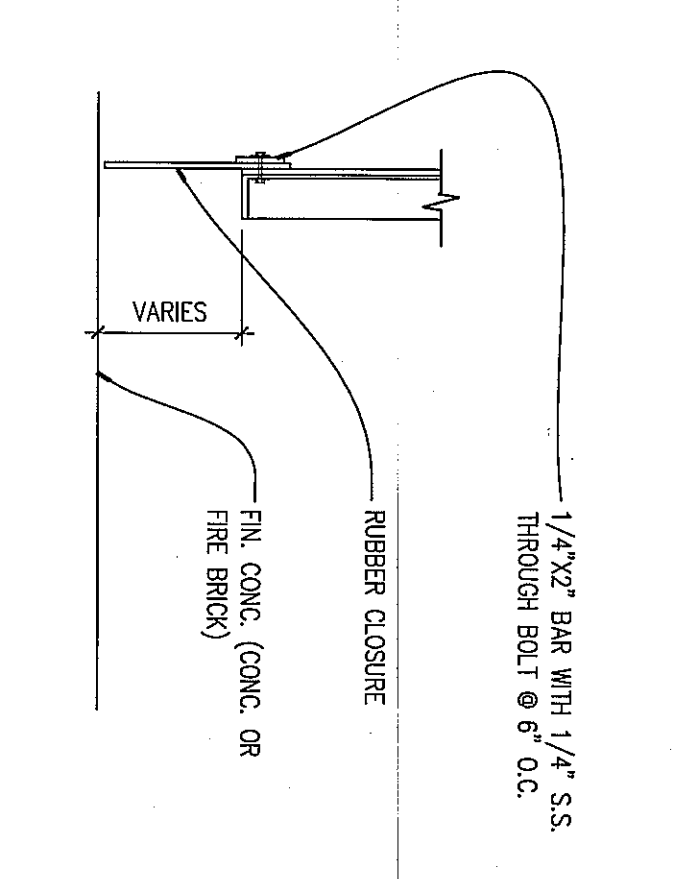
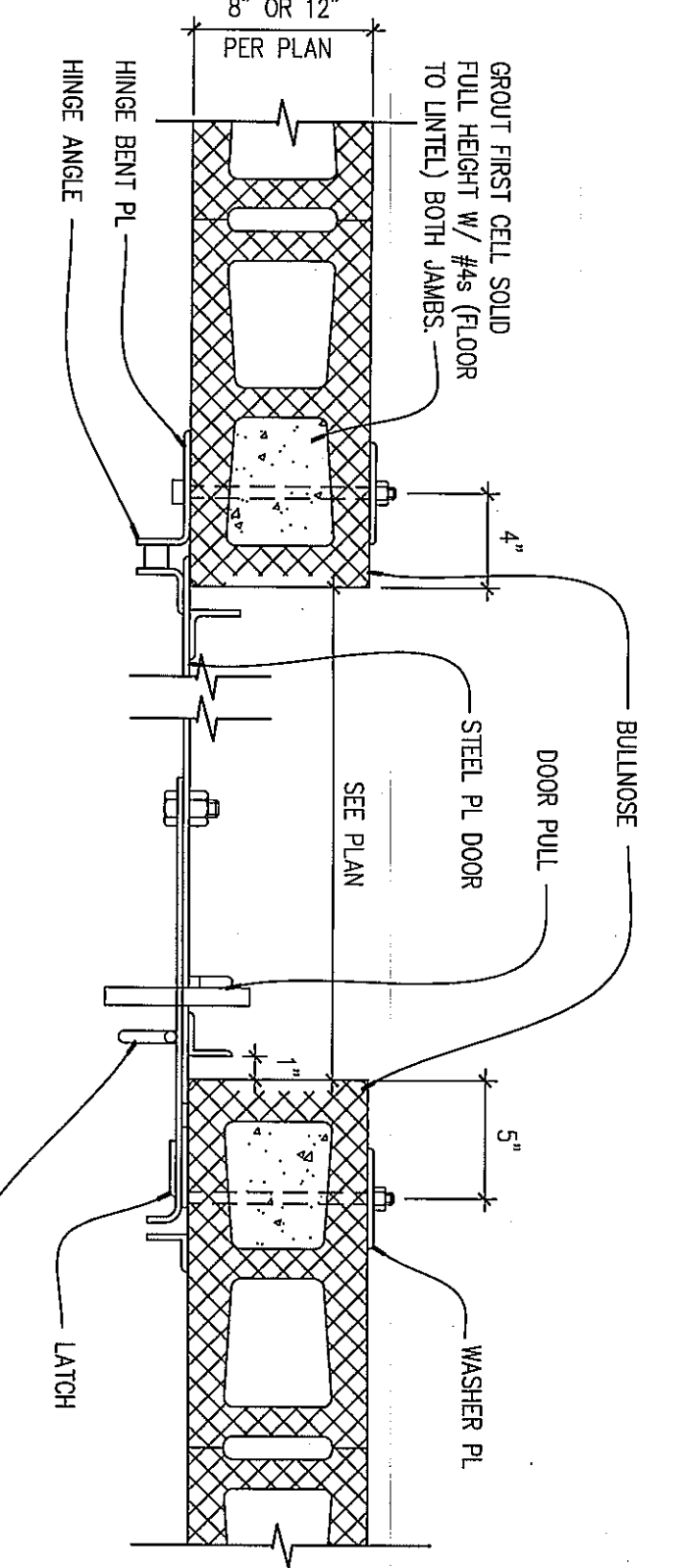
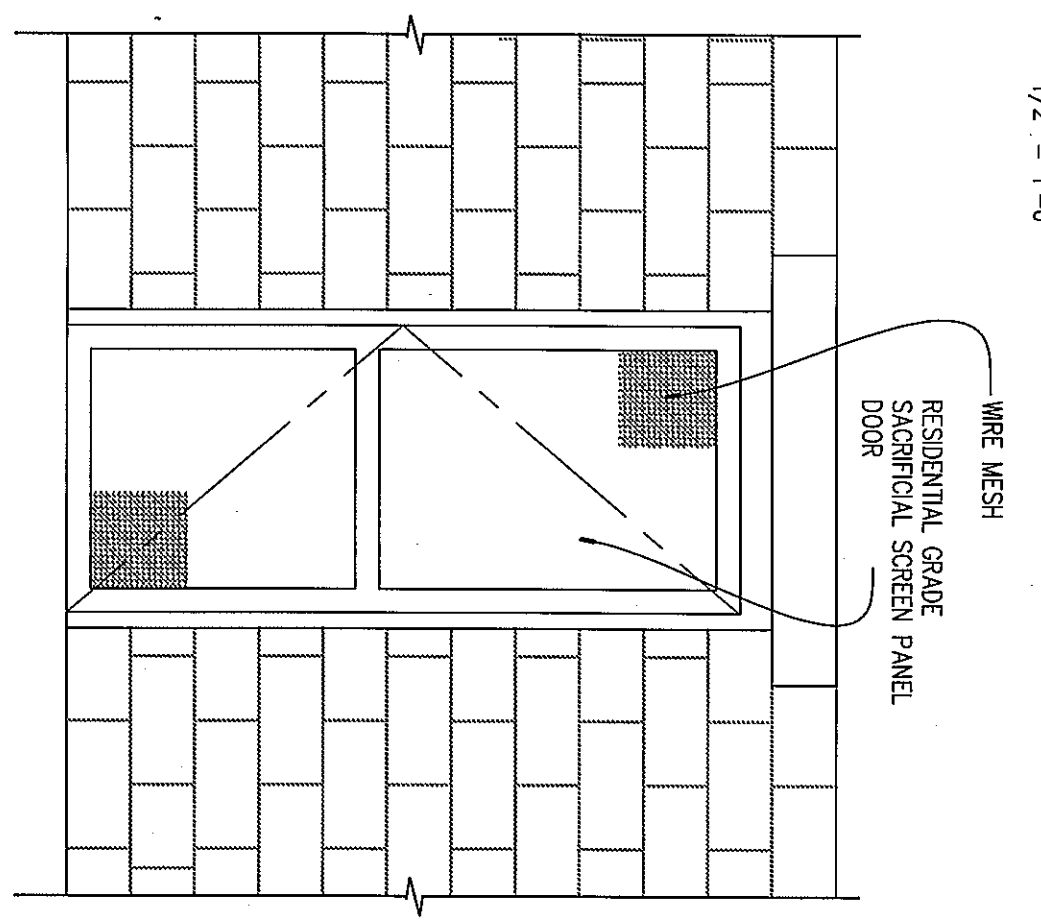
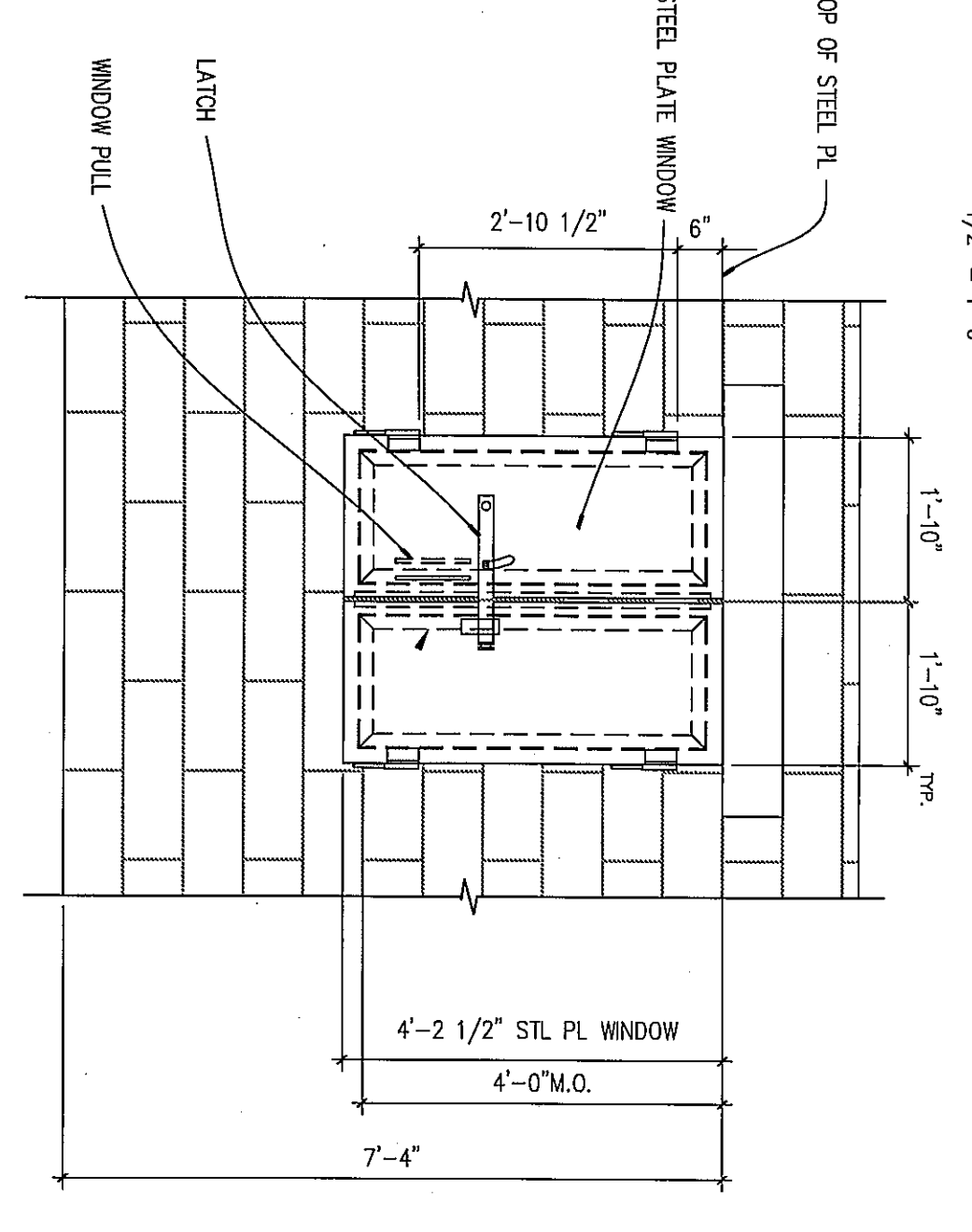
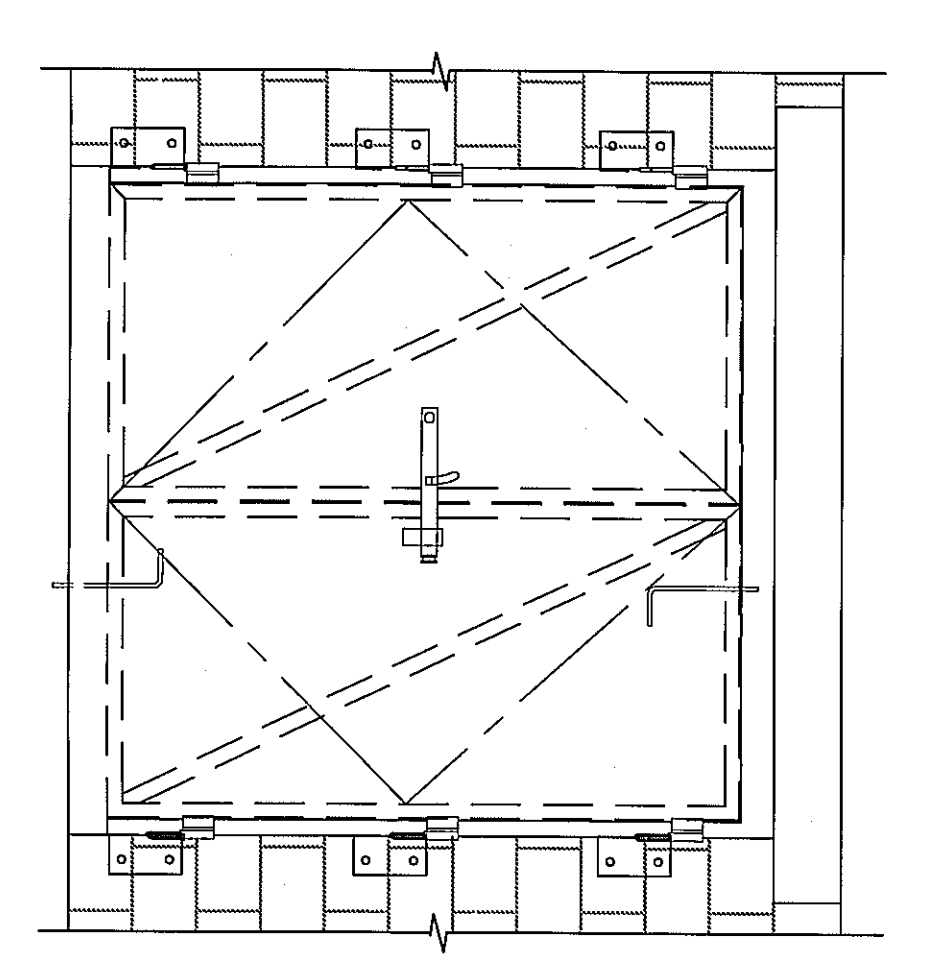
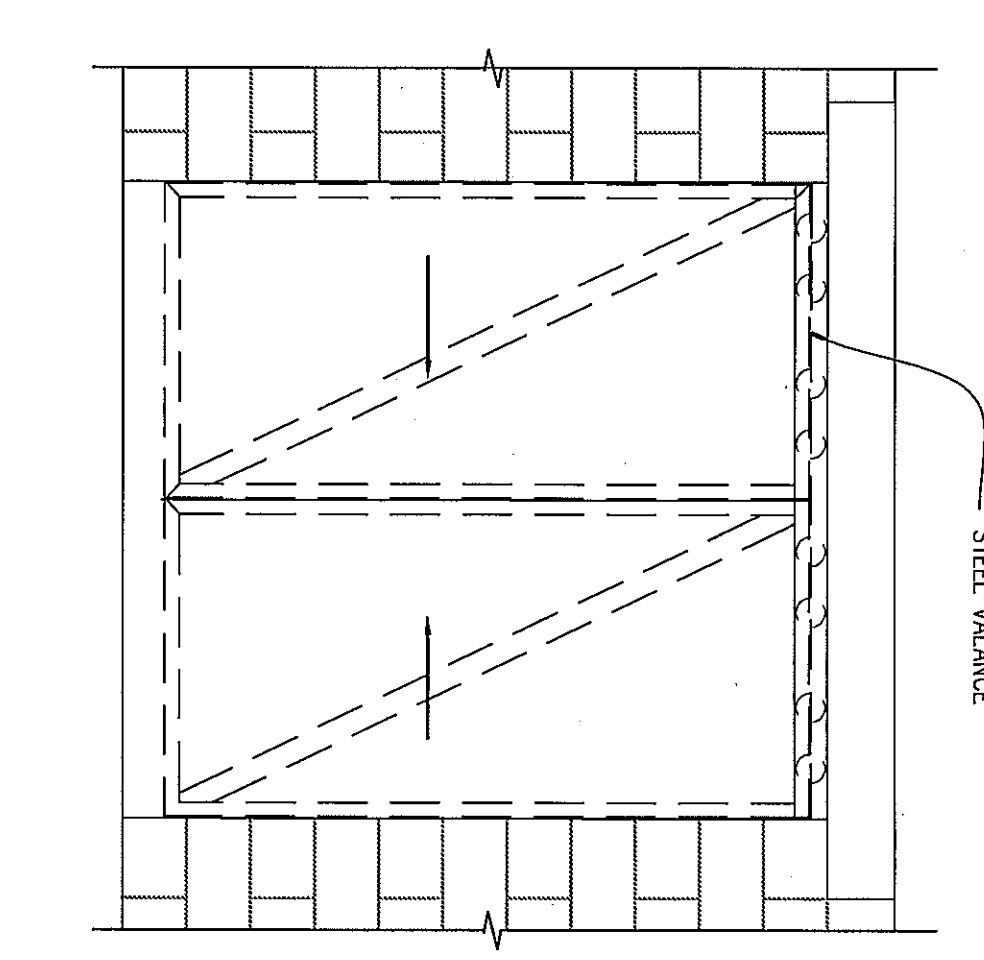
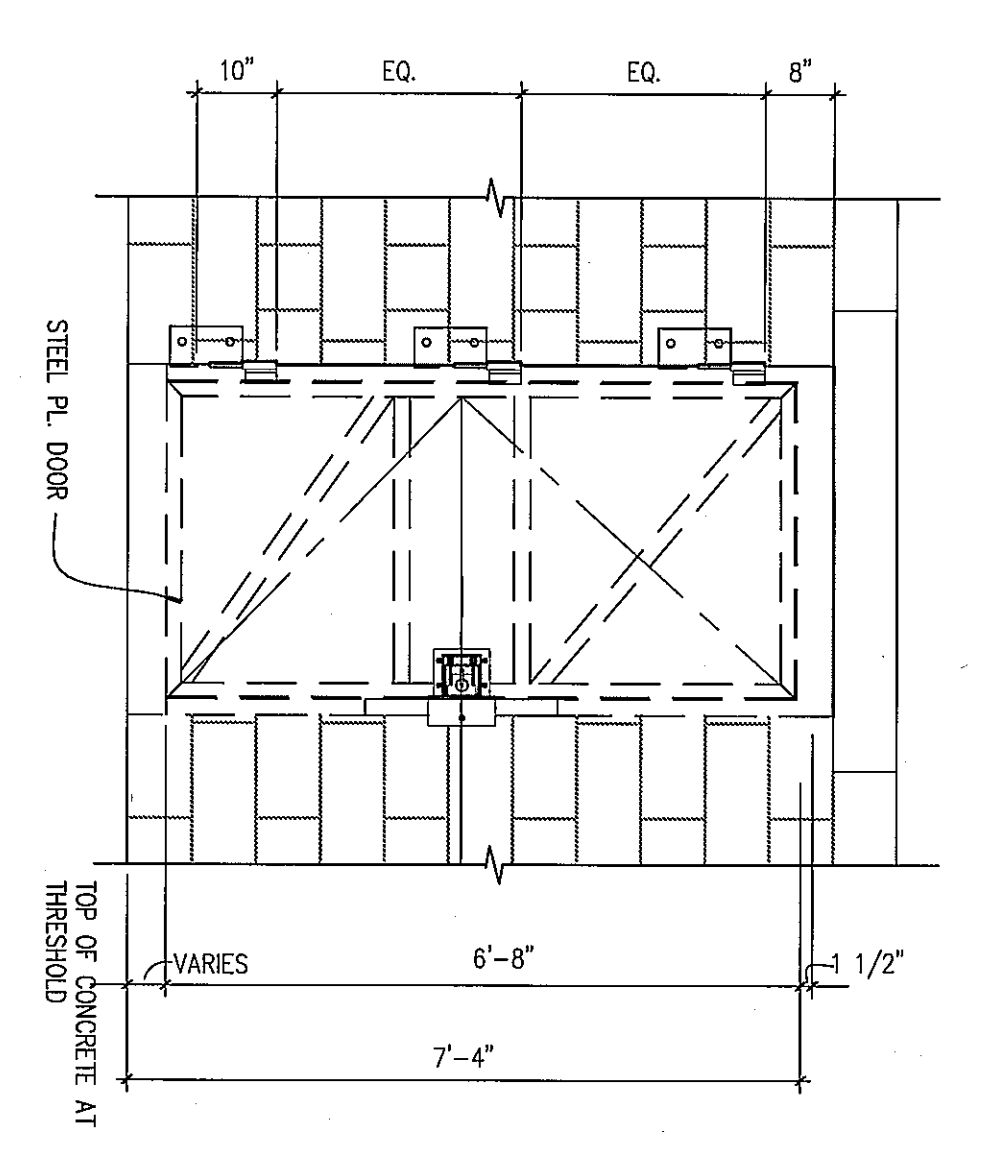
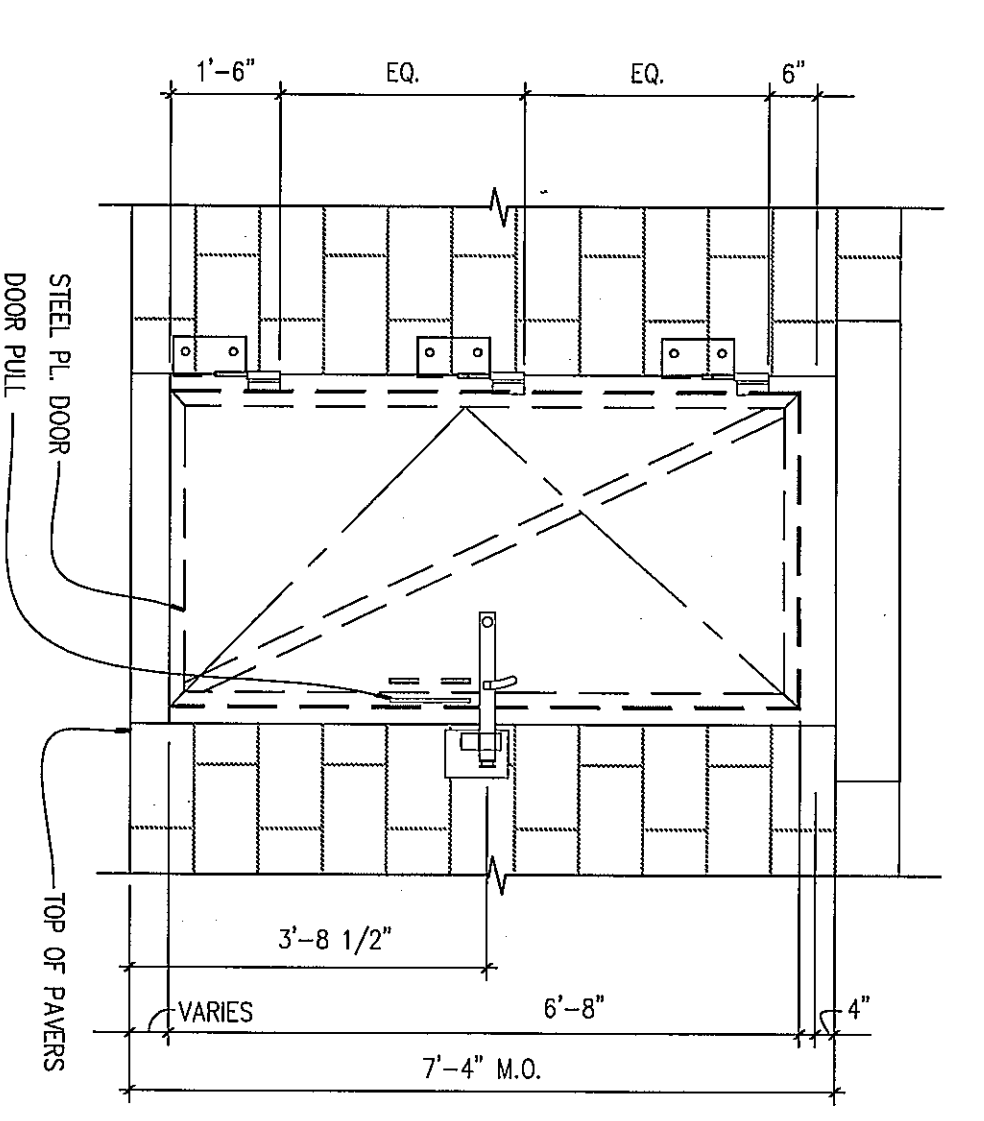
ISSUE	05 / 02 / 07	
PROJECT NO.	07-2200 - 0175	
CAD DWG FILE	XXXXXXXXX.dwg	
DRAWN BY:	AKILE	
CHECKED BY:	DG	

© L. Robert Kimball & Associates  
 Architects and Engineers, Inc.

MISC. DETAILS  
**A5.01**







**Kimball**  
 L. Robert Kimball & Associates  
 Architects and Engineers, Inc.  
 615 West Highland Ave.  
 Ebensburg, PA 15931  
 Phone: (814) 472-7700  
 Fax: (814) 472-7712  
 Email: info@kimball.com  
 Web: www.kimball.com

CONSULTANTS  
 PROFESSIONAL  
 PROJECT NAME:  
 WESTMORELAND COUNTY COMMUNITY COLLEGE CLASS A BURN BUILDING  
 OWNER:  
 WESTMORELAND COUNTY COMMUNITY COLLEGE  
 YOUNGWOOD, PA 15897

MARK	DATE	DESCRIPTION
05/02/07 <td>05/02/07 <td>ISSUE</td> </td>	05/02/07 <td>ISSUE</td>	ISSUE
07-2200-0175 <td>07-2200-0175 <td>PROJECT NO.</td> </td>	07-2200-0175 <td>PROJECT NO.</td>	PROJECT NO.
XXXXXXX.dwg	XXXXXXX.dwg	CAD DWG FILE
AKLE	AKLE	DRAWN BY
DG	DG	CHECKED BY

© L. Robert Kimball & Associates  
 Architects and Engineers, Inc.

DOOR TYPES AND DETAILS  
**A6.01**











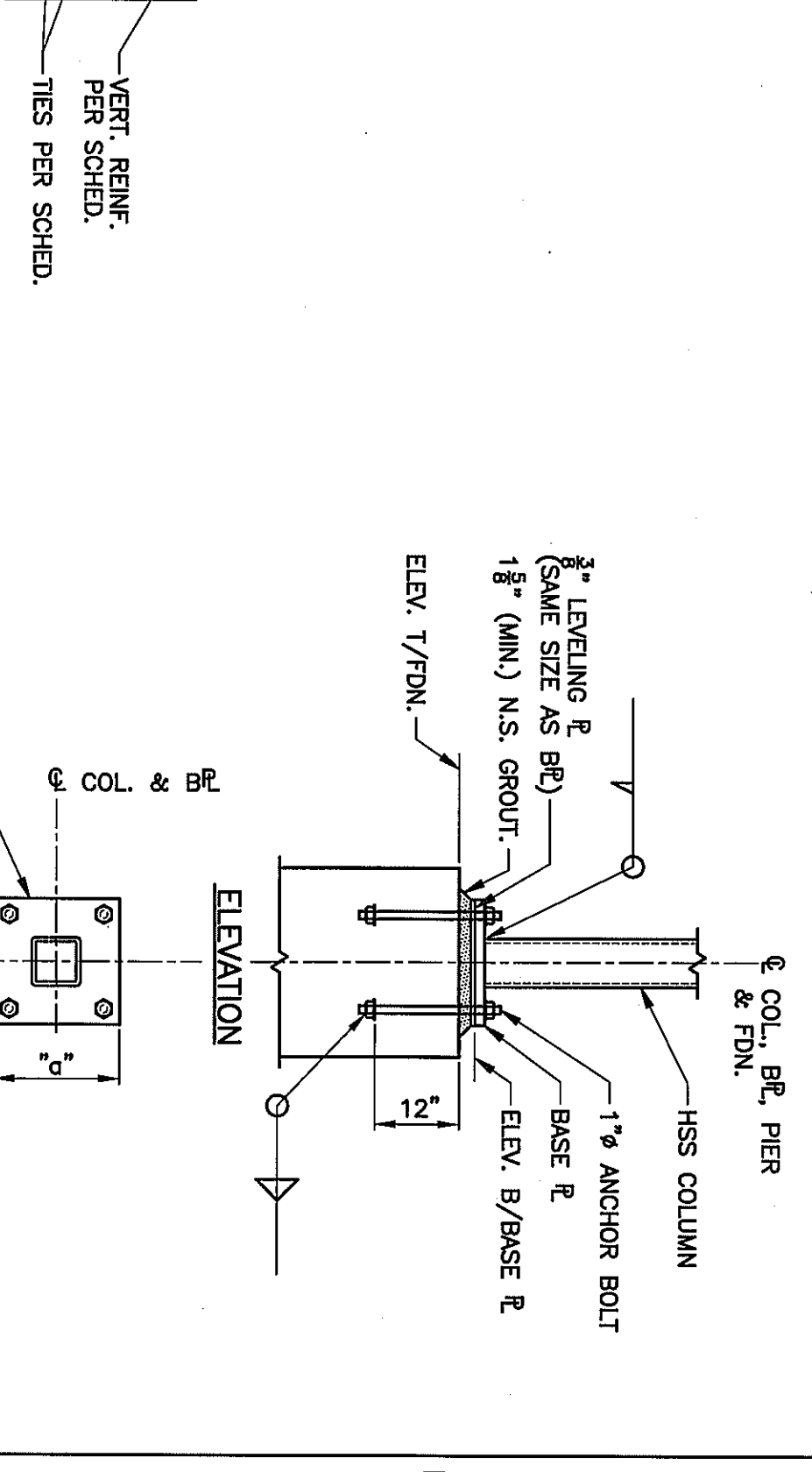
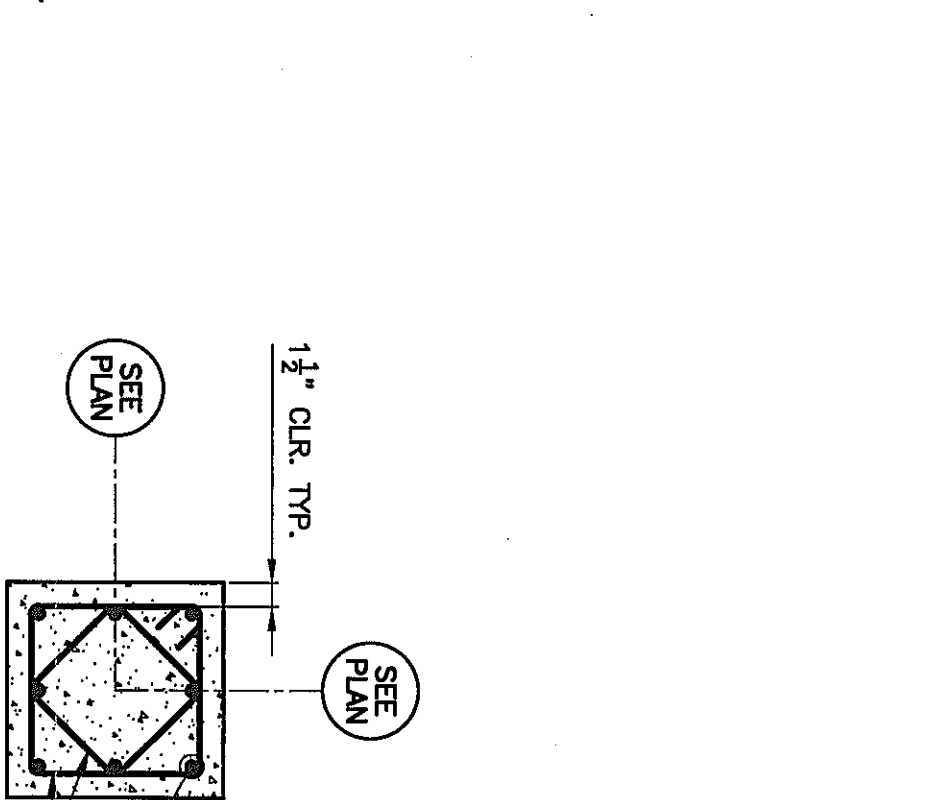
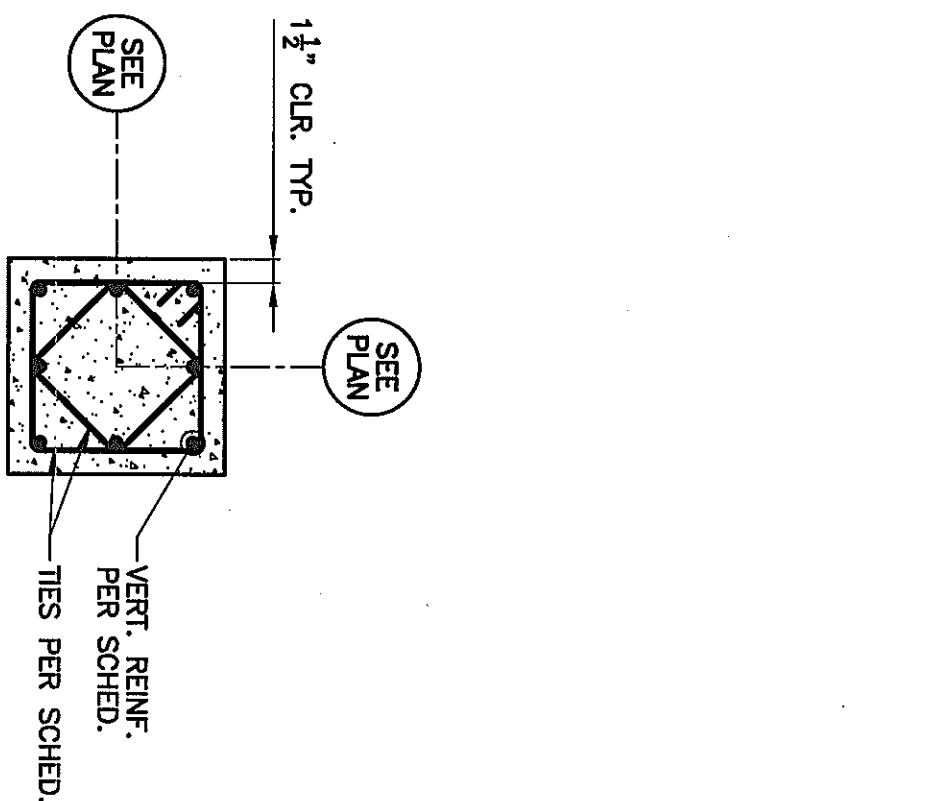


**CONCRETE COLUMN SCHEDULE**

COLUMN MARK	1A	1B	1D	2A	2B	2D	3C	4A	4B	4D
ROOF										
COL. SIZE (A&B) U.N.O.	12"x12"	12"x12"	12"x12"	12"x12"	12"x12"	12"x12"	12"x12"	12"x12"	12"x12"	12"x12"
VERTICAL TIES	8-#5	8-#5	8-#5	8-#5	8-#5	8-#5	8-#5	8-#5	8-#5	8-#5
MIN. LAP	24"	24"	24"	24"	24"	24"	24"	24"	24"	24"
COL. REIN. DETAIL	A	A	A	A	A	A	A	A	A	A
SECOND FLOOR										
COL. SIZE (A&B) U.N.O.	12"x12"	12"x12"	12"x12"	12"x12"	12"x12"	12"x12"	12"x12"	12"x12"	12"x12"	12"x12"
VERTICAL TIES	8-#5	8-#5	8-#5	8-#5	8-#5	8-#5	8-#5	8-#5	8-#5	8-#5
MIN. LAP	24"	24"	24"	24"	24"	24"	24"	24"	24"	24"
COL. REIN. DETAIL	A	A	A	A	A	A	A	A	A	A
SLAB										
COL. SIZE (A&B) U.N.O.	12"x12"	12"x12"	12"x12"	12"x12"	12"x12"	12"x12"	12"x12"	12"x12"	12"x12"	12"x12"
VERTICAL TIES	8-#5	8-#5	8-#5	8-#5	8-#5	8-#5	8-#5	8-#5	8-#5	8-#5
MIN. LAP	24"	24"	24"	24"	24"	24"	24"	24"	24"	24"
COL. REIN. DETAIL	A	A	A	A	A	A	A	A	A	A
FOOTINGS										
SIZE (A&B)	7'-0"x7'-0"	5'-0"x5'-0"	5'-0"x5'-0"	5'-0"x5'-0"	5'-0"x5'-0"	5'-0"x5'-0"	5'-0"x5'-0"	5'-0"x5'-0"	5'-0"x5'-0"	5'-0"x5'-0"
REINFORCING (G.E.M.)	7-#6	9-#6	6-#6	11-#7	12-#8	9-#6	5-#6	8-#6	6-#6	6-#6
ELEVATION TOP	-2'-0"	-2'-0"	-2'-0"	-1'-6"	-2'-0"	-2'-0"	-2'-0"	-2'-0"	-2'-0"	-2'-0"
REMARKS										

**COLUMN SCHEDULE**

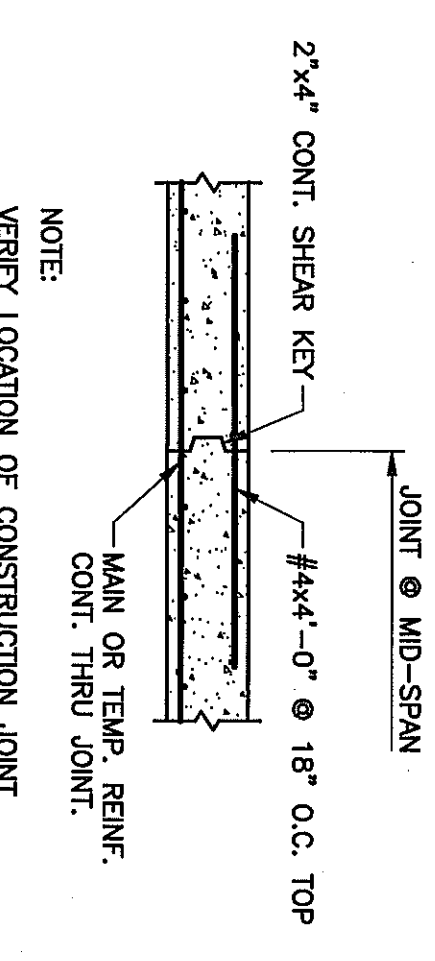
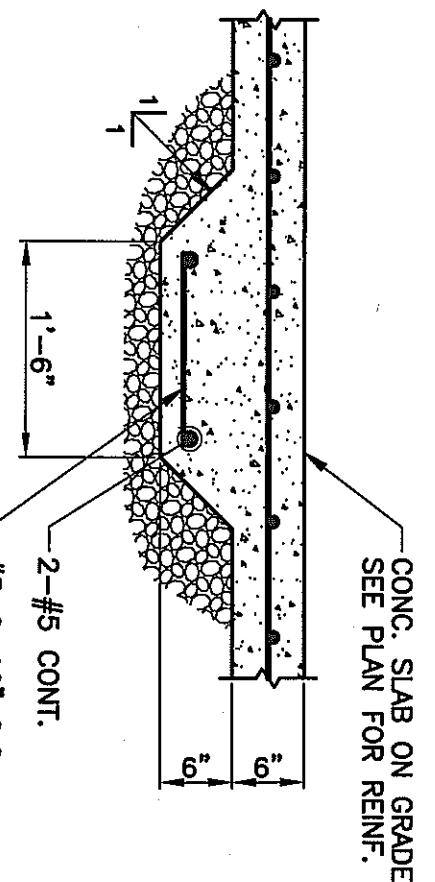
COLUMN MARK	0.1	0.1	2.2	2.2	3.9	3.9
ROOF						
COL. SIZE (A&B) U.N.O.	18"x18"	18"x18"	18"x18"	18"x18"	18"x18"	18"x18"
VERTICAL TIES	8-#6	8-#6	8-#6	8-#6	8-#6	8-#6
MIN. LAP	24"	24"	24"	24"	24"	24"
COL. REIN. DETAIL	A	A	A	A	A	A
SECOND						
COL. SIZE (A&B) U.N.O.	18"x18"	18"x18"	18"x18"	18"x18"	18"x18"	18"x18"
VERTICAL TIES	8-#6	8-#6	8-#6	8-#6	8-#6	8-#6
MIN. LAP	24"	24"	24"	24"	24"	24"
COL. REIN. DETAIL	A	A	A	A	A	A
SLAB						
COL. SIZE (A&B) U.N.O.	18"x18"	18"x18"	18"x18"	18"x18"	18"x18"	18"x18"
VERTICAL TIES	8-#6	8-#6	8-#6	8-#6	8-#6	8-#6
MIN. LAP	24"	24"	24"	24"	24"	24"
COL. REIN. DETAIL	A	A	A	A	A	A
FOOTINGS						
SIZE (A&B)	18"x18"	18"x18"	18"x18"	18"x18"	18"x18"	18"x18"
REINFORCING (G.E.M.)	4-#6	4-#6	4-#6	4-#6	4-#6	4-#6
ELEVATION TOP	-2'-6"	-2'-6"	-2'-6"	-2'-6"	-2'-6"	-2'-6"
REMARKS						



**COLUMN REINFORCING DETAIL 'A'**

**PIER REINFORCING DETAIL 'A'**

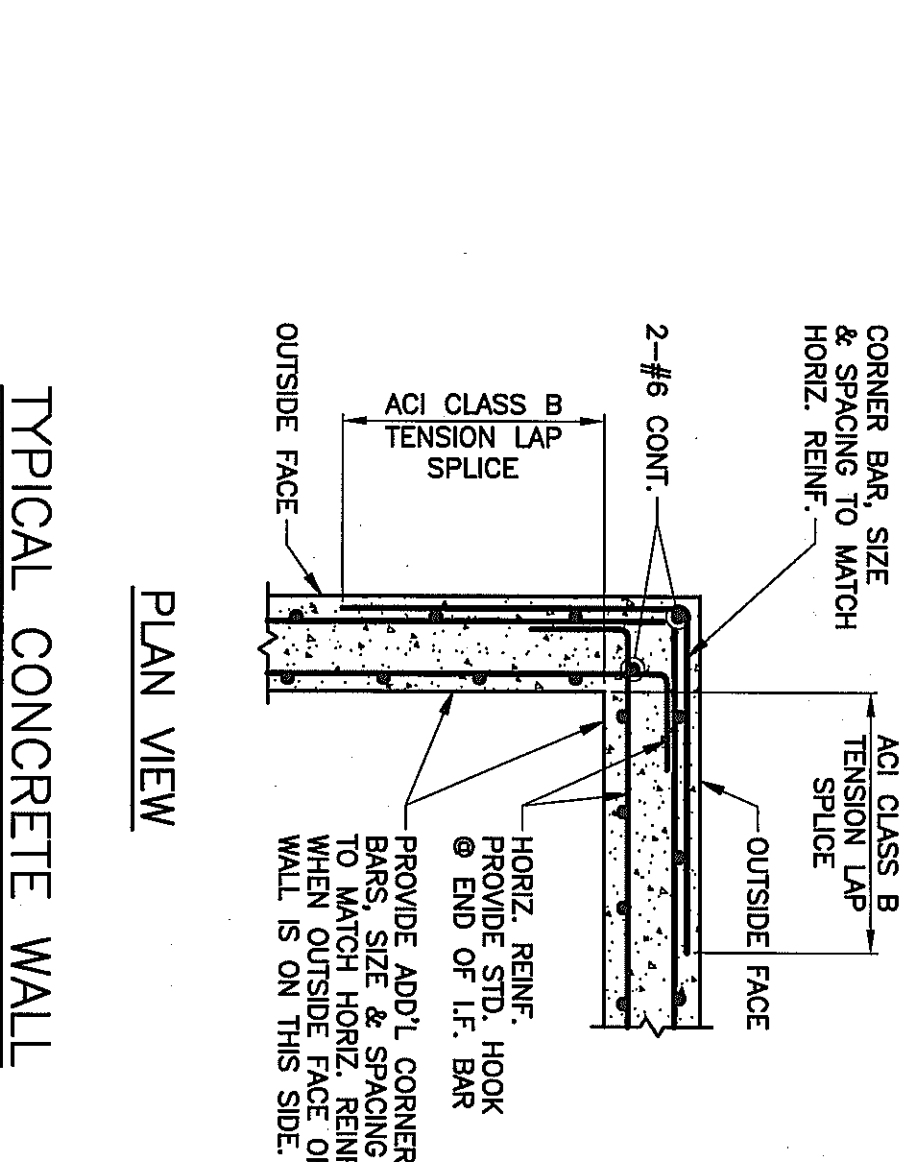
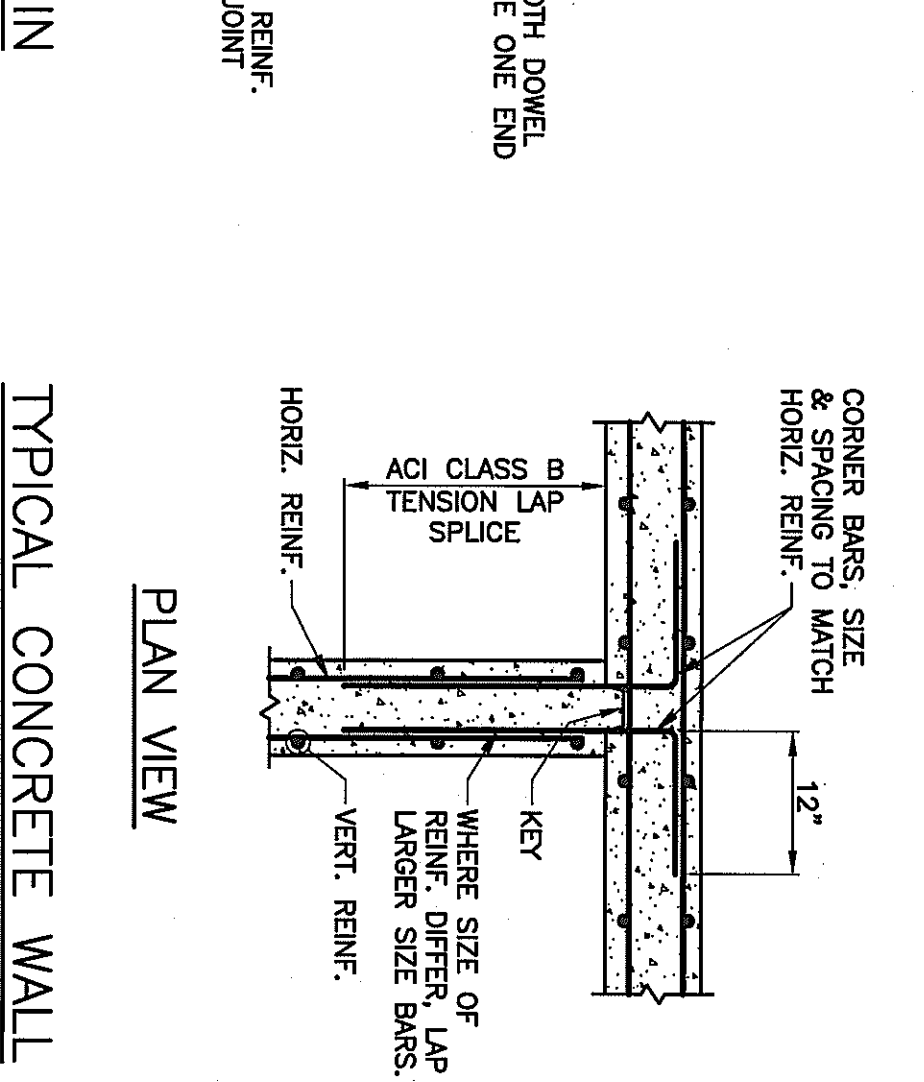
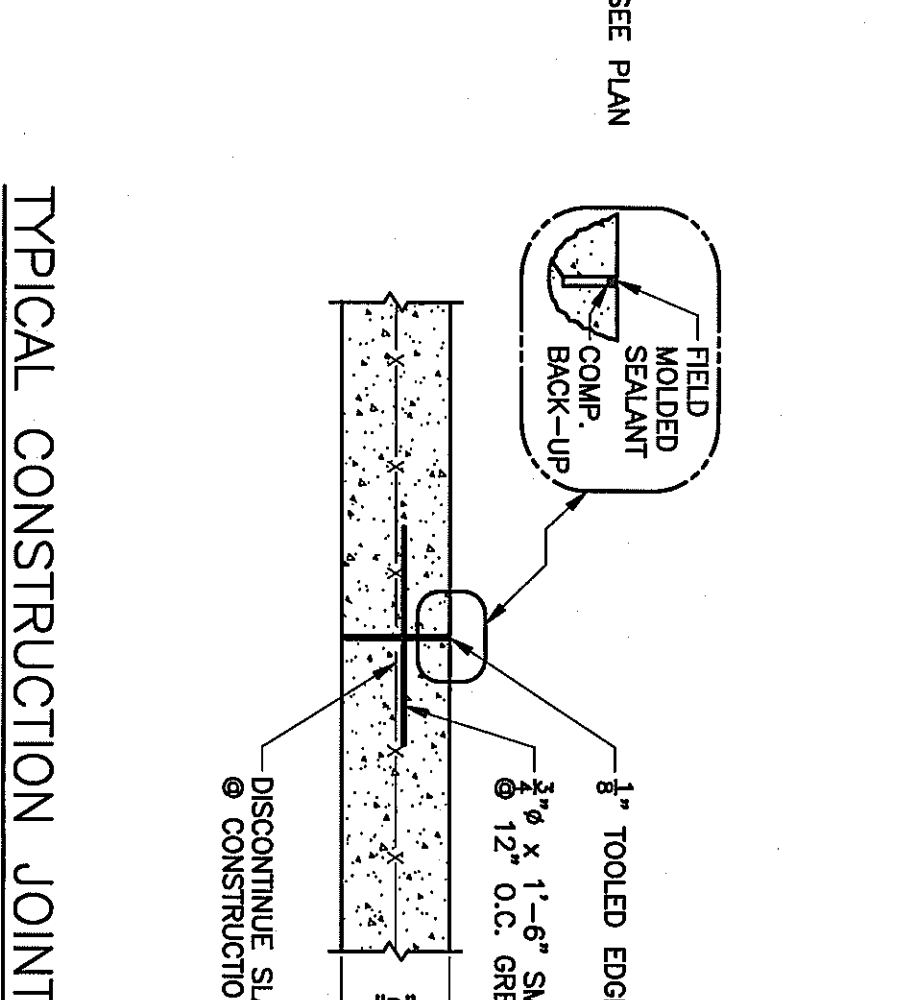
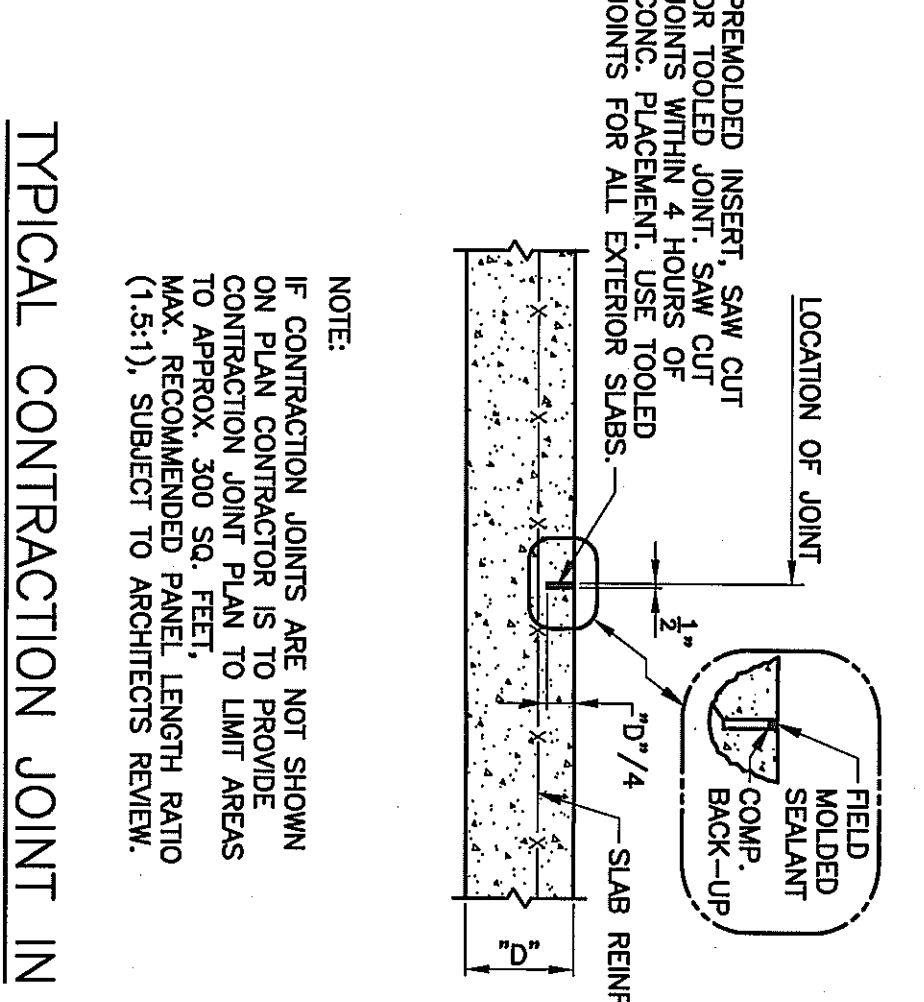
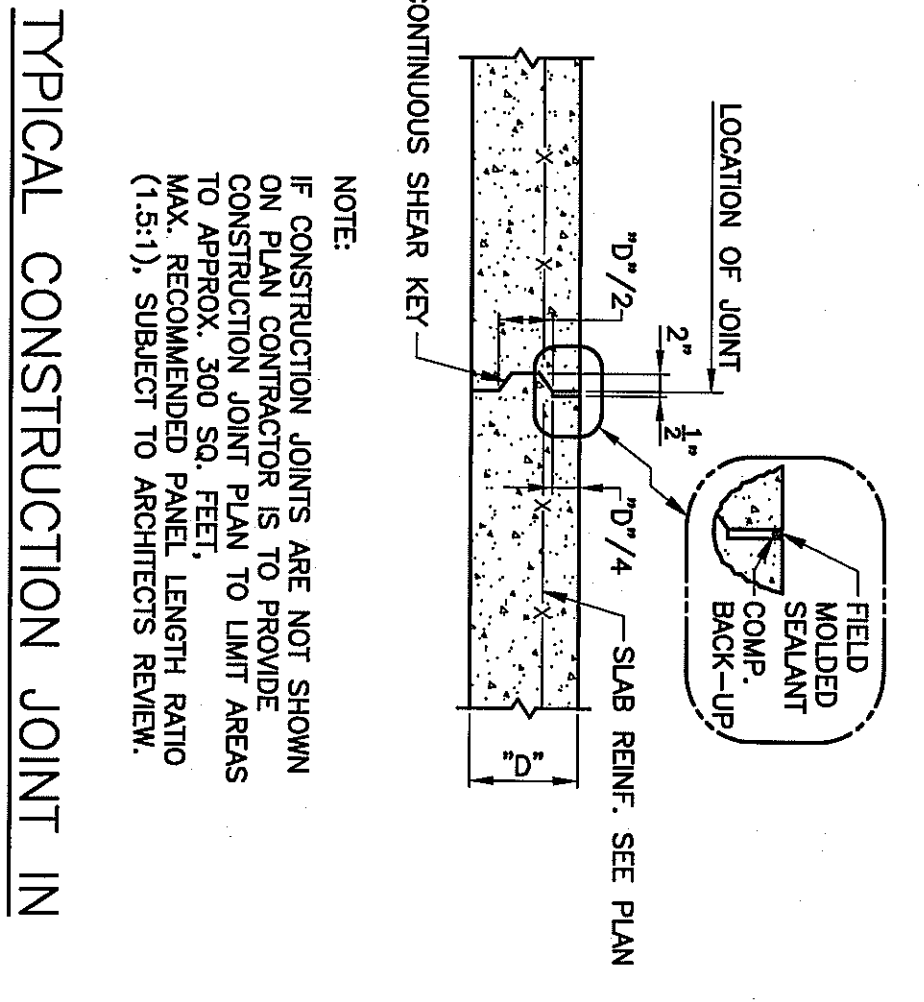
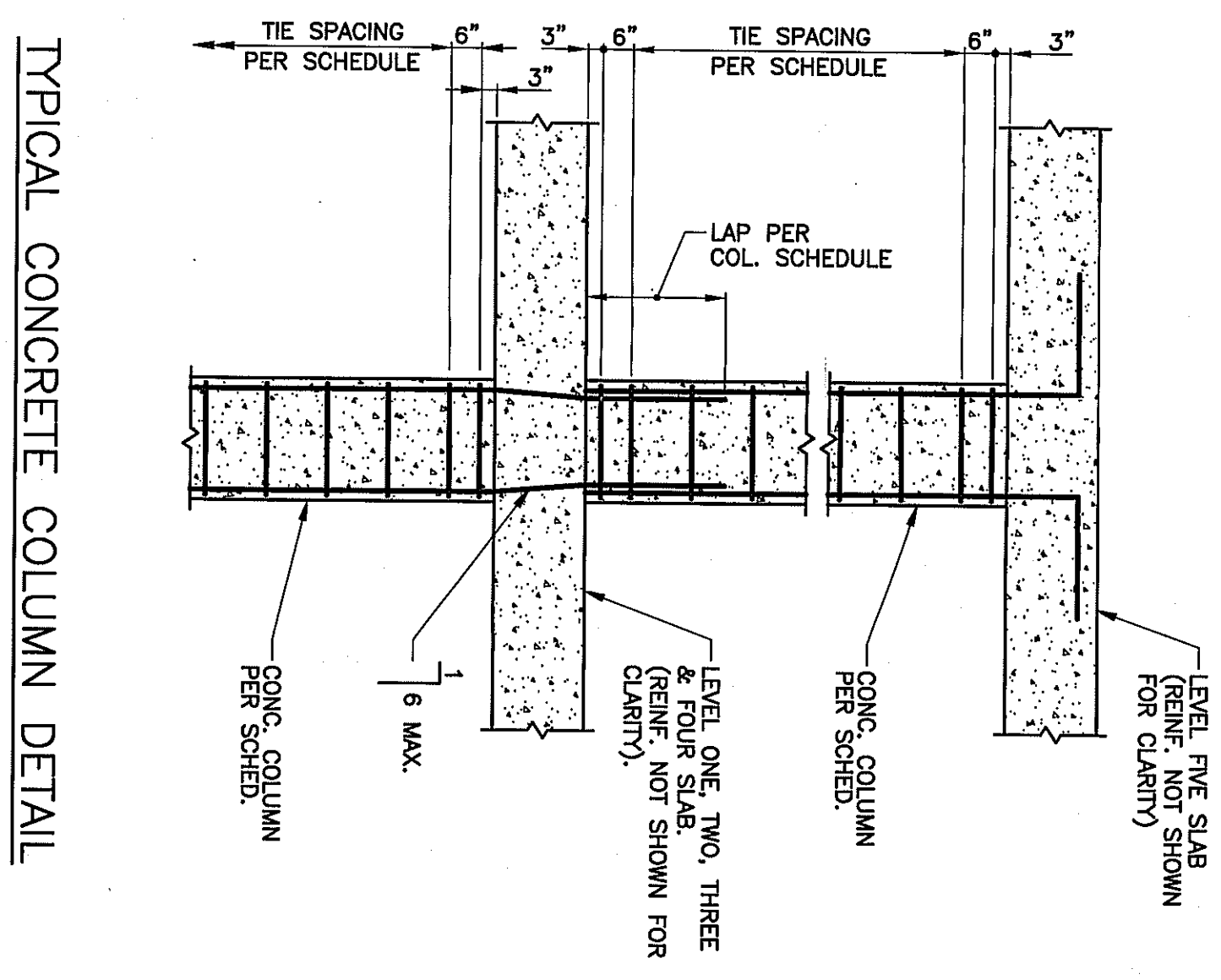
**TYPICAL COLUMN BASE DETAIL '1'**



**TYPICAL THICKENED CONCRETE SLAB ON GRADE AT CONCRETE MASONRY PARTITIONS DETAIL**

**TYPICAL SPREAD FOOTING DETAIL**

**TYPICAL CONSTRUCTION JOINT AT FRAMED SLAB DETAIL**



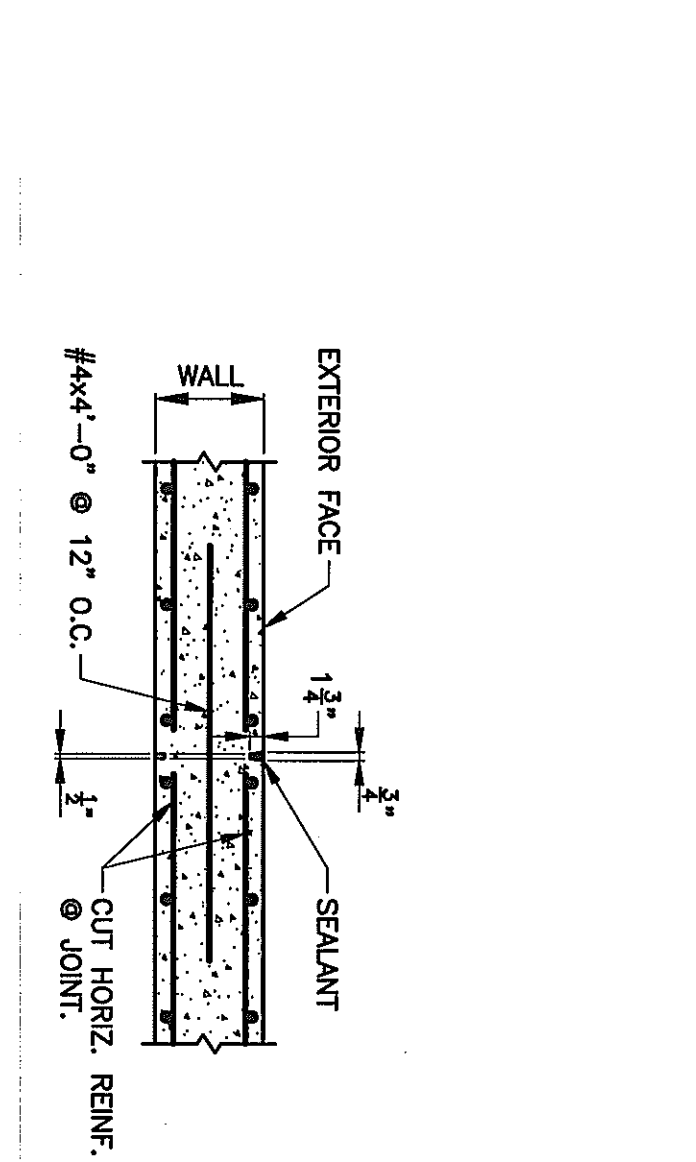
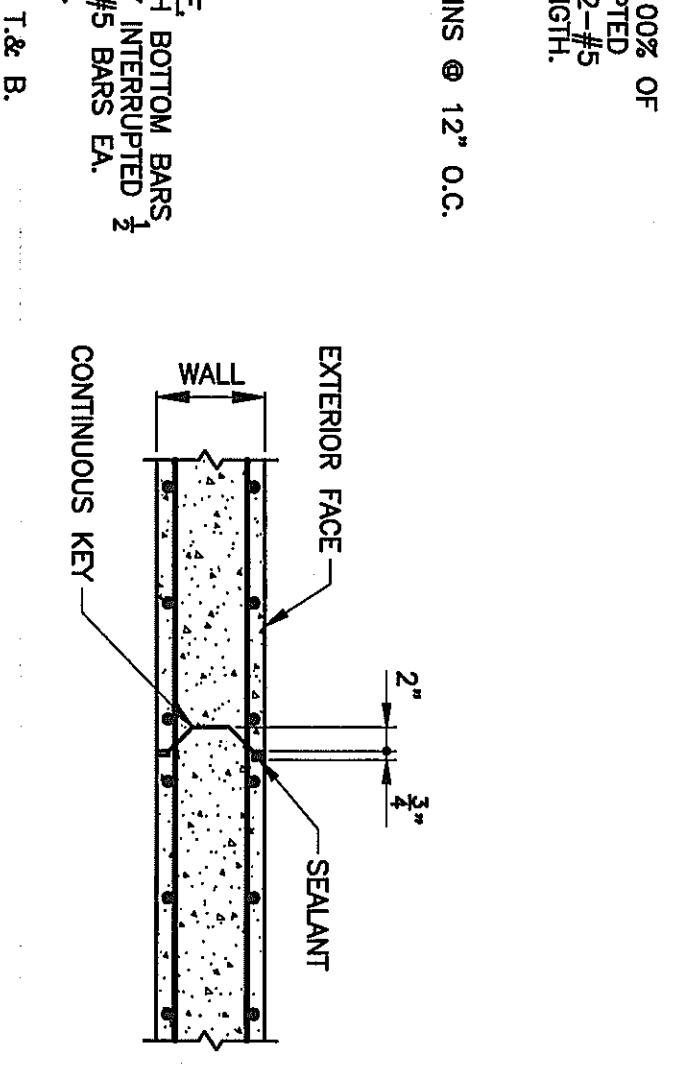
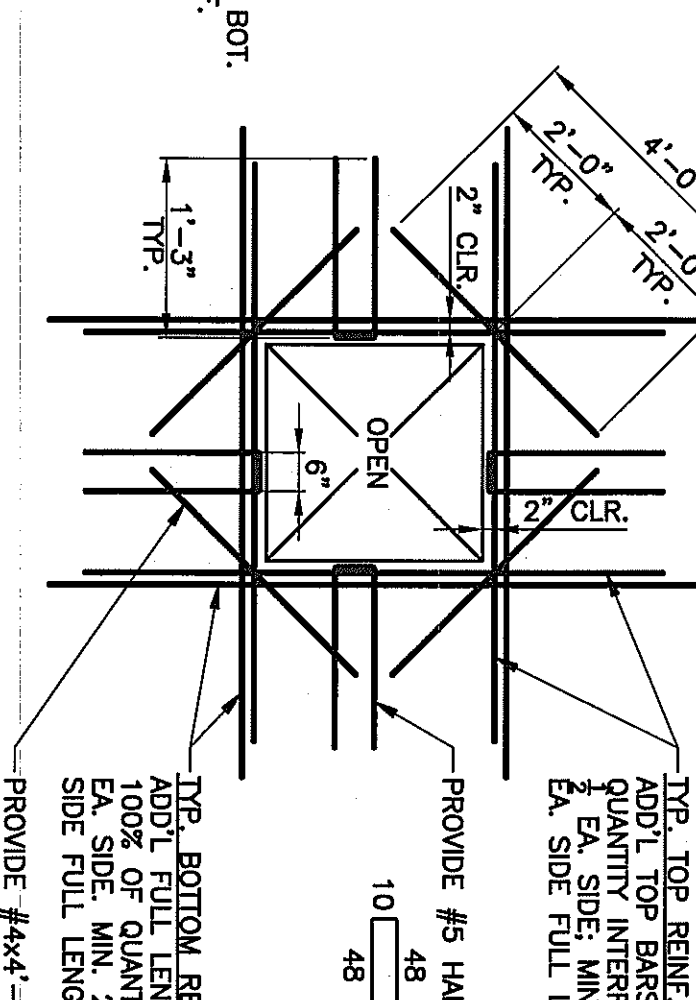
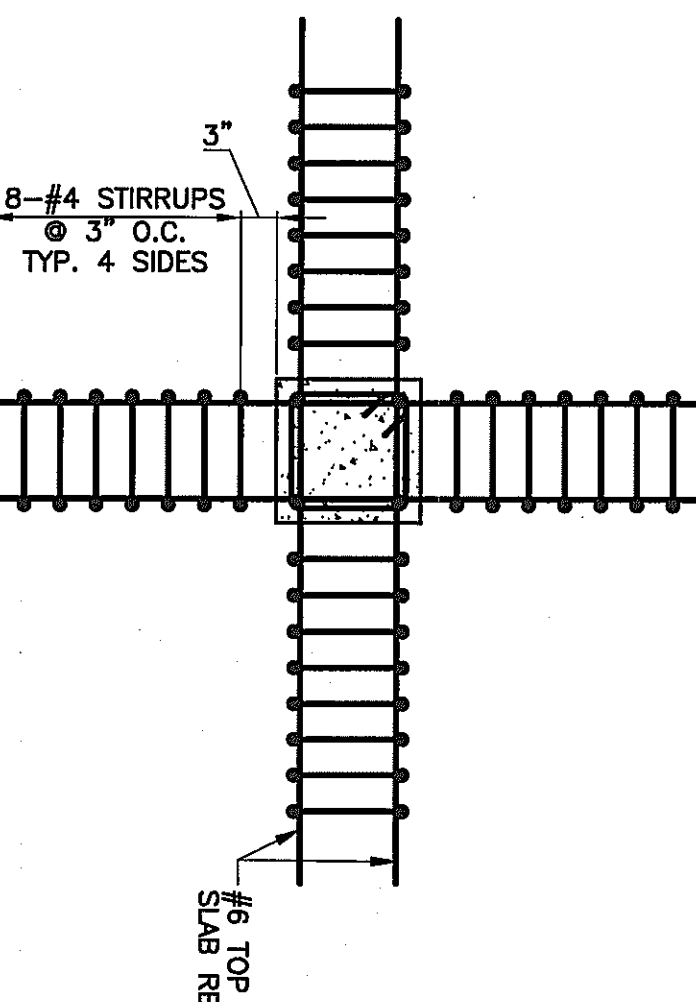
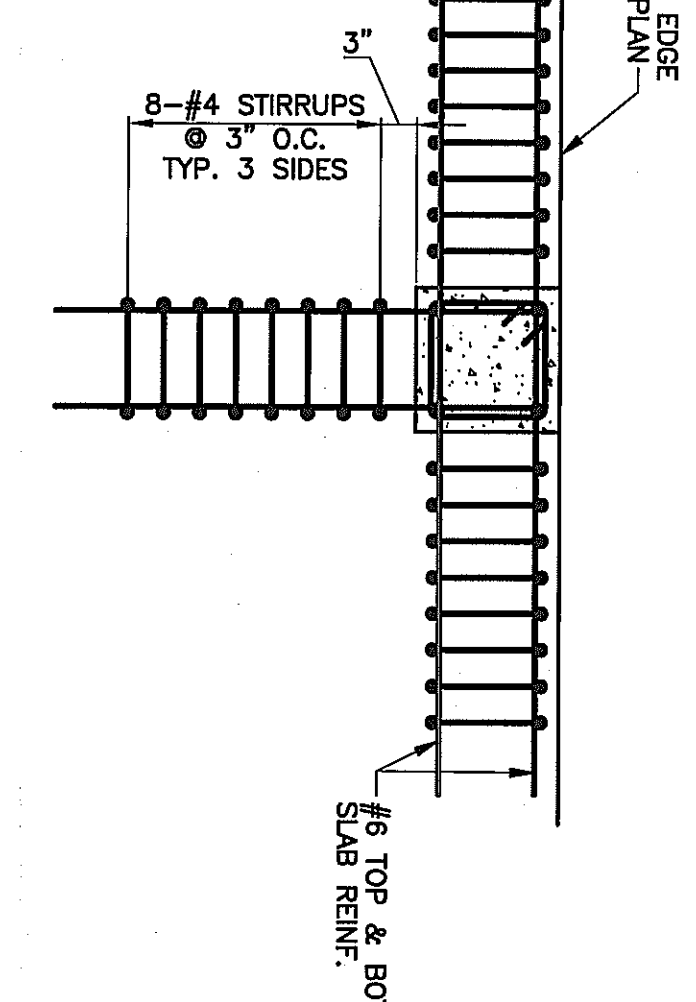
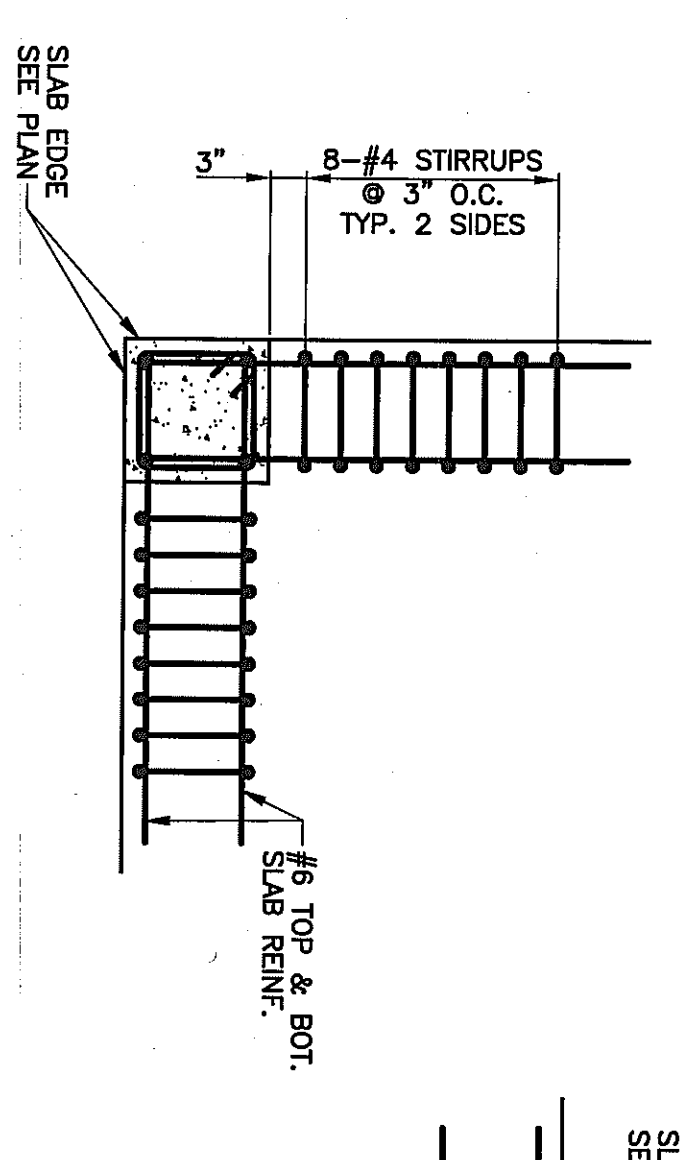
**TYPICAL CONSTRUCTION JOINT IN SLAB ON GRADE DETAIL**

**TYPICAL CONSTRUCTION JOINT IN SLAB ON GRADE DETAIL**

**TYPICAL CONSTRUCTION JOINT IN SLAB ON GRADE DETAIL**

**TYPICAL CONCRETE WALL INTERSECTION DETAIL**

**TYPICAL CONCRETE WALL CORNER DETAIL**



**SHEARHEAD REINFORCING DETAIL A**

**SHEARHEAD REINFORCING DETAIL B**

**SHEARHEAD REINFORCING DETAIL C**

**TYPICAL FLAT SLAB OPENING REINFORCING DETAIL**

**TYPICAL CONSTRUCTION JOINT IN CONCRETE WALL DETAIL**

**TYPICAL CONSTRUCTION JOINT IN CONCRETE WALL DETAIL**

THIS DRAWING HAS BEEN PRODUCED ON ATLANTIC ENGINEERING SERVICES CAD SYSTEM. ANY OTHER LETTERING, LINES OR SYMBOLS, OTHER THAN PROFESSIONAL STAMPS AND SIGNATURES, HAVE BEEN MADE WITHOUT THE AUTHORIZATION OF ATLANTIC ENGINEERING SERVICES AND ARE INVALID.

PROJECT #07-114  
 DATE: 05/02/07  
 DRAWN BY: RSB  
 CHECKED BY: RSB  
 ARCHITECTS AND ENGINEERS, INC.

WESTMORELAND COUNTY COMMUNITY COLLEGE  
 BURN BUILDING  
 YOUNGWOOD, PA 15687

Atlantic Engineering Services  
 615 West Highland Ave.  
 Ebersburg, PA 15931  
 Phone: (814) 472-7700  
 Fax: (814) 472-7712  
 www.aes-engineering.com

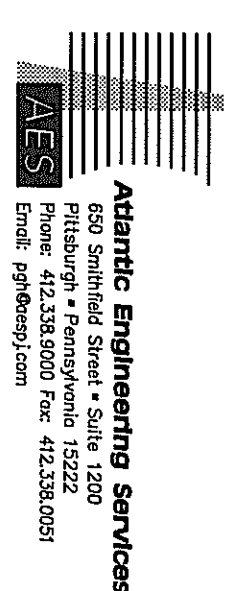
**Kimball**  
 L. Robert Kimball & Associates  
 Architects and Engineers, Inc.

**S3.00**

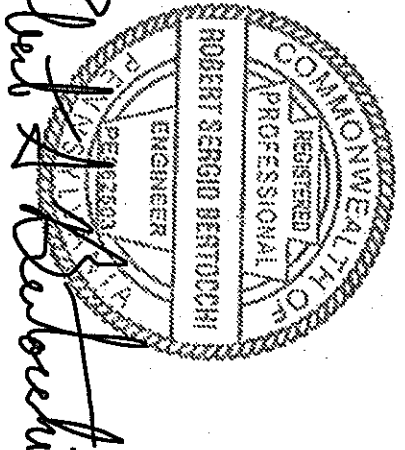




CONSULTANTS



PROFESSIONAL



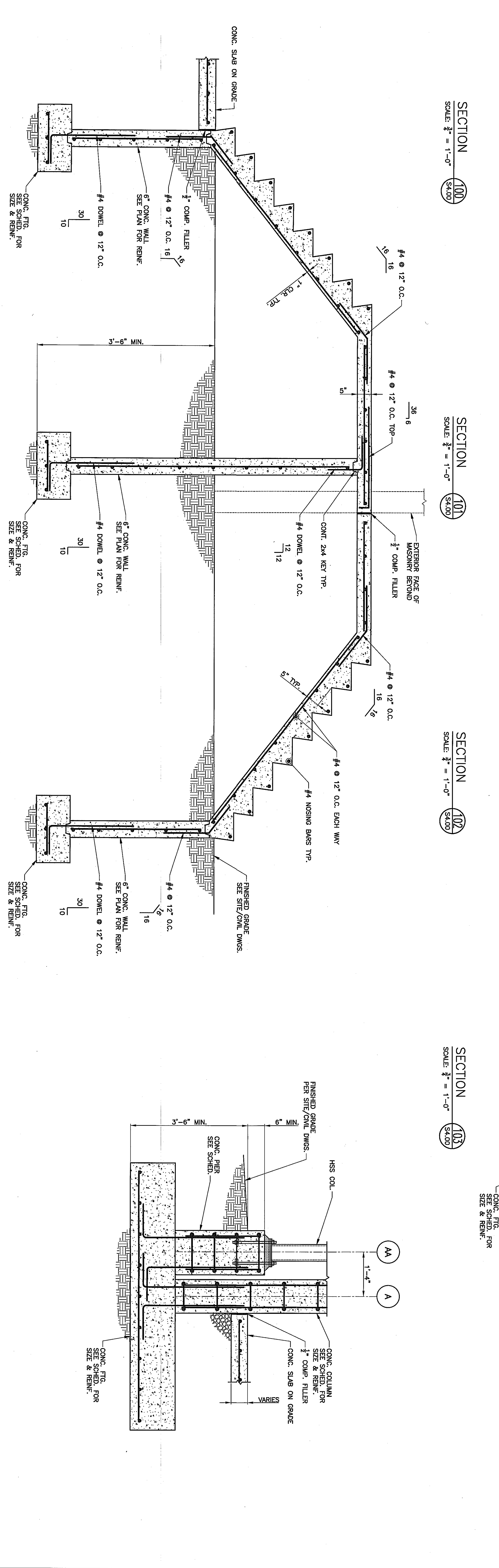
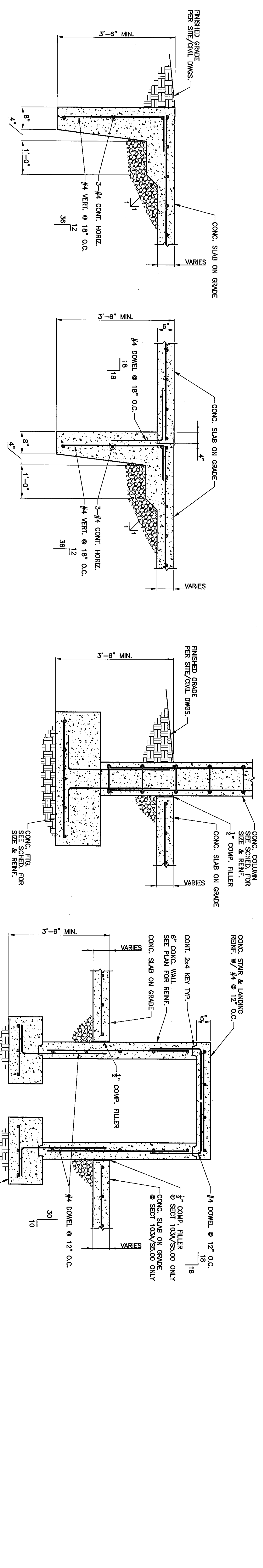
PROJECT NAME:

WESTMORELAND  
 COUNTY COMMUNITY  
 COLLEGE CLASS A  
 BURN BUILDING  
 OWNER:  
 WESTMORELAND COUNTY  
 COMMUNITY COLLEGE  
 YOUNGWOOD, PA 15897

KEYPLAN

MARK	DATE	DESCRIPTION
ISSUE	05/02/07	
PROJECT NO.	07-2200-0175	
CAD DWG FILE	BJS	
DRAWN BY:	RBS	
CHECKED BY:	RBS	
© L. Robert Kimball & Associates Architects and Engineers, Inc.		

SECTIONS AND DETAILS



**SECTION 106**  
 SCALE: 3/8" = 1'-0"  
 S4.00  
 FINISHED GRADE PER SITE/CIVIL DWGS.  
 CONCRETE PIER FOR PLAN  
 6" MIN.  
 3'-6" MIN.

**SECTION 109A**  
 SCALE: 3/8" = 1'-0"  
 S4.00  
 CONCRETE STRIP & LANDING REINF. 1/2" #4 @ 12" O.C.  
 CONT. 2x4 KEY TYP.  
 6" CONCRETE WALL SEE PLAN FOR REINF.  
 CONCRETE SLAB ON GRADE  
 VARIES  
 3'-6" MIN.  
 1'-0"

**SECTION 110A**  
 SCALE: 3/8" = 1'-0"  
 S4.00  
 CONCRETE COLUMN SEE SCHED. FOR SIZE & REINF.  
 1/2" COMP. FILLER  
 CONCRETE SLAB ON GRADE  
 VARIES  
 3'-6" MIN.  
 1'-0"

**SECTION 111A**  
 SCALE: 3/8" = 1'-0"  
 S4.00  
 CONCRETE COLUMN SEE SCHED. FOR SIZE & REINF.  
 1/2" COMP. FILLER  
 CONCRETE SLAB ON GRADE  
 VARIES  
 3'-6" MIN.  
 1'-0"

**SECTION 112A**  
 SCALE: 3/8" = 1'-0"  
 S4.00  
 CONCRETE STRIP & LANDING REINF. 1/2" #4 @ 12" O.C.  
 CONT. 2x4 KEY TYP.  
 6" CONCRETE WALL SEE PLAN FOR REINF.  
 CONCRETE SLAB ON GRADE  
 VARIES  
 3'-6" MIN.  
 1'-0"

**SECTION 113A**  
 SCALE: 3/8" = 1'-0"  
 S4.00  
 CONCRETE COLUMN SEE SCHED. FOR SIZE & REINF.  
 1/2" COMP. FILLER  
 CONCRETE SLAB ON GRADE  
 VARIES  
 3'-6" MIN.  
 1'-0"

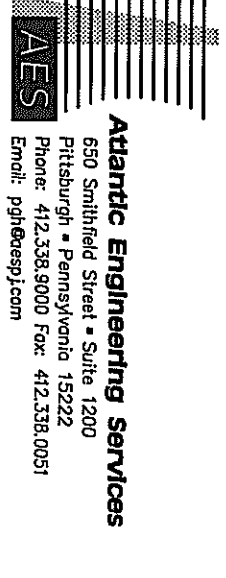
THIS DRAWING HAS BEEN PRODUCED ON ATLANTIC ENGINEERING SERVICES' CAD SYSTEM. ANY OTHER LETTERING, LINES OR SYMBOLS, OTHER THAN PROFESSIONAL STAMPS AND SIGNATURES, HAVE BEEN MADE WITHOUT THE AUTHORIZATION OF ATLANTIC ENGINEERING SERVICES AND ARE INVALID.

AES PROJECT #07-114 AES PLOT DATE: 04-30-07

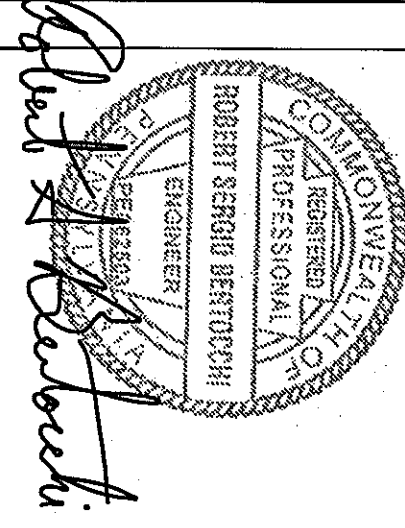
**S4.00**



CONSULTANTS



PROFESSIONAL



PROJECT NAME:

WESTMORELAND COUNTY COMMUNITY COLLEGE CLASS A BURN BUILDING  
 OWNER: WESTMORELAND COUNTY COMMUNITY COLLEGE  
 YOUNGWOOD, PA 15987

KEY PLAN

MARK	DATE	DESCRIPTION
ISSUE: 05 / 02 / 07		
PROJECT NO: 07-2200-0775		
CAD DWG FILE: RBS		
DRAWN BY: RBS		
CHECKED BY: L. Robert Kimball & Associates Architects and Engineers, Inc.		

SHEET TITLE  
 SECTIONS AND DETAILS

